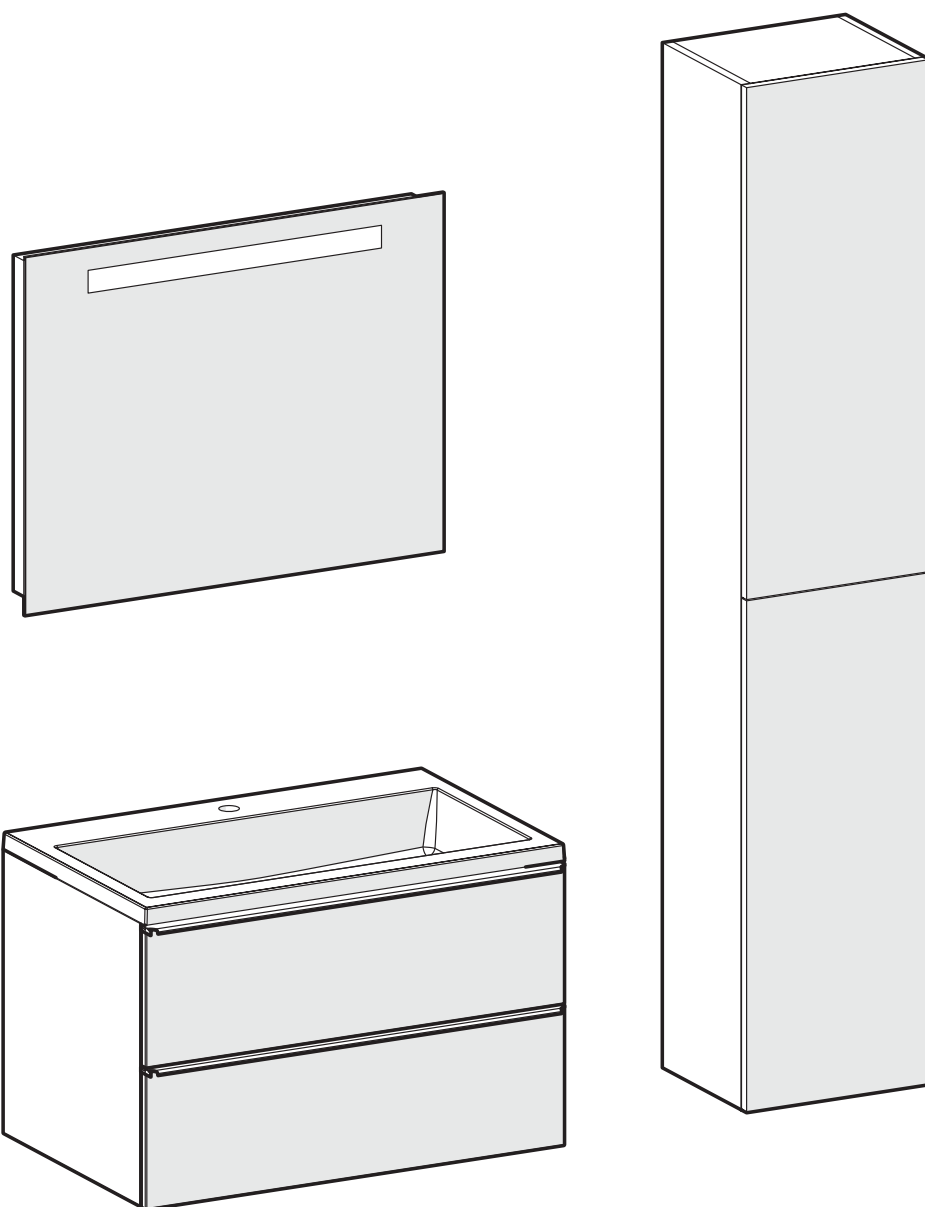
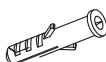


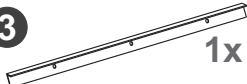
# GRANDE


KUPAONSKI ORMARIĆ S UMIVAONIKOM I DVIJE LADICE  
OGLEDALA  
VISEĆE KOLONE

KOPALNIŠKA OMARICA Z UMIVALNIKOM IN DVEMA PREDALOMA  
OGLEDALA  
VISEĆE STRANSKE OMARICE




1  2x\*/3x  
Ø 6 mm

3  1x

5  2x  
Ø 12 mm

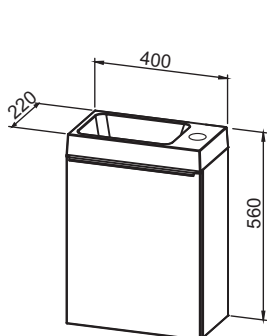
2  2x\*/3x  
Ø 4x50 mm

4  2x\*/3x  
Ø 3,5x16 mm

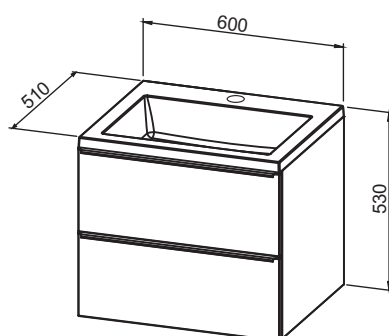
6  2x  
Ø 8x90 mm

7  2x  
Ø 8 mm

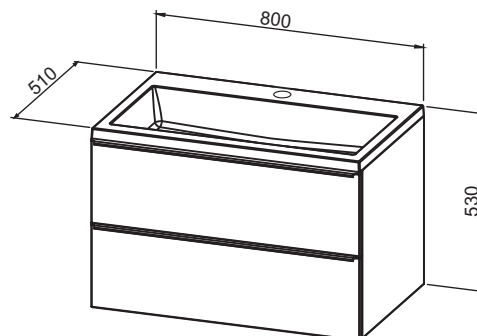
\* Samo za Grande small 40



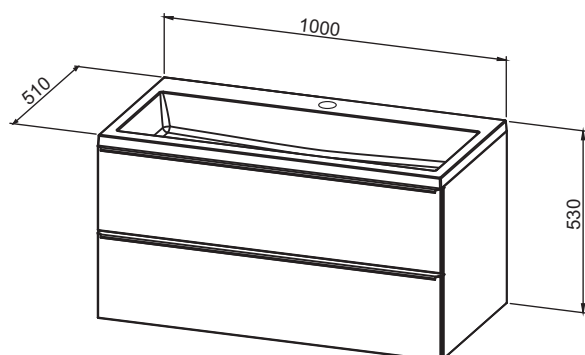
Grande small 40



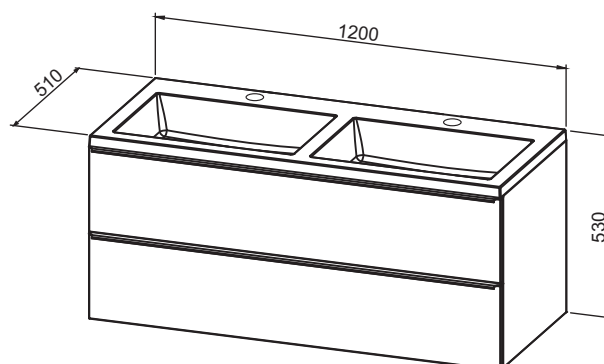
Grande 60



Grande 80

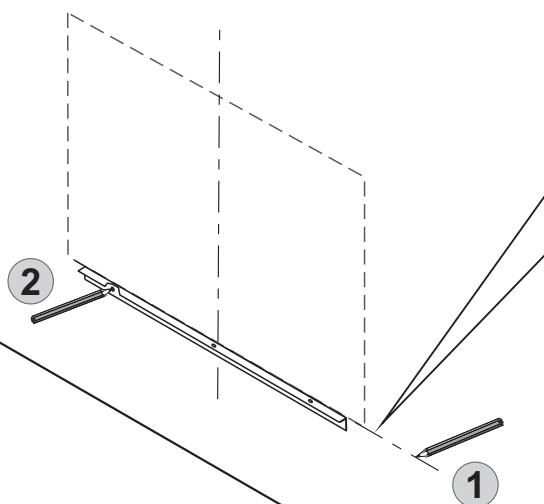
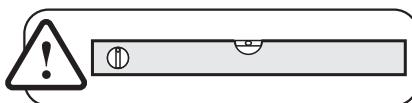


Grande 100



Grande 120

1

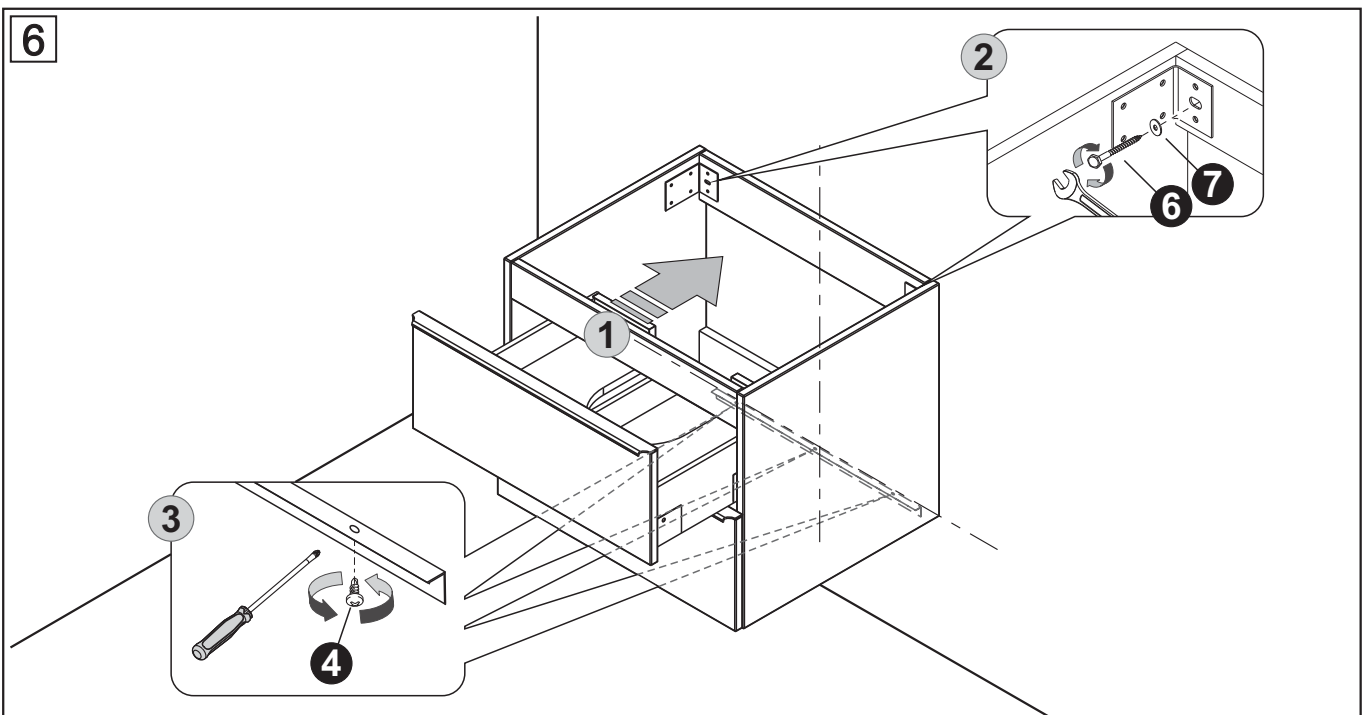
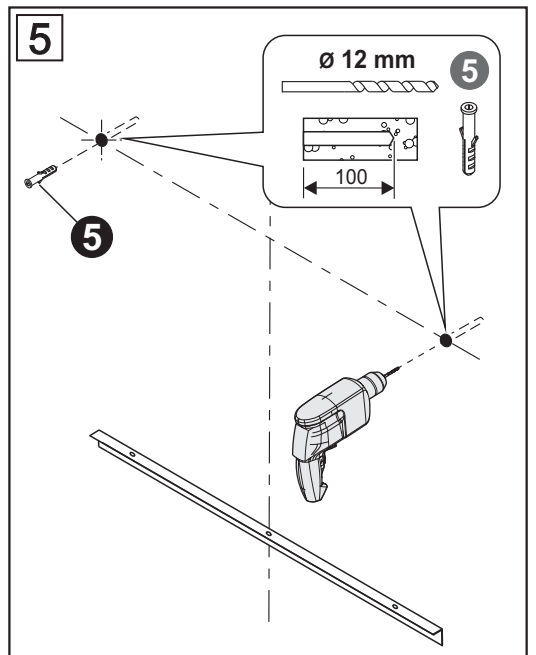
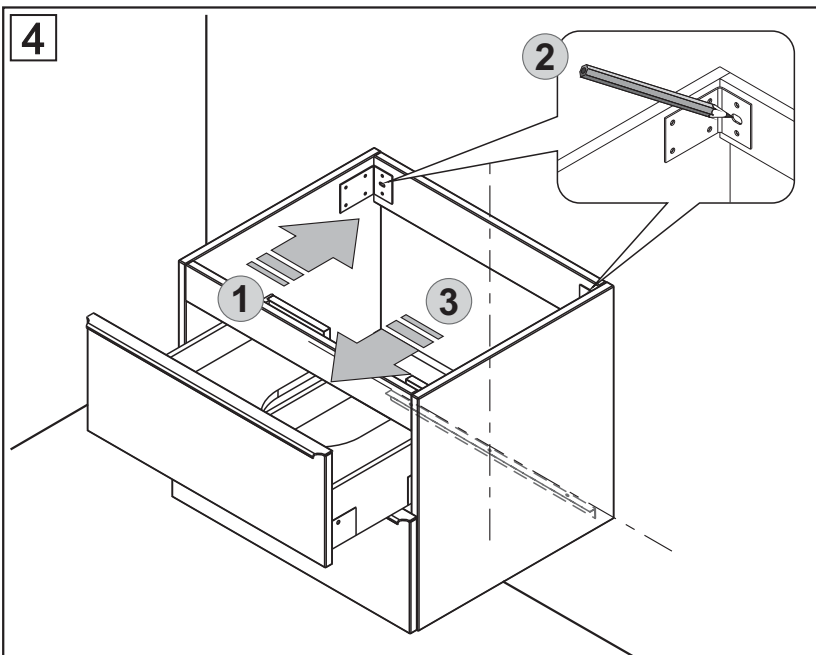
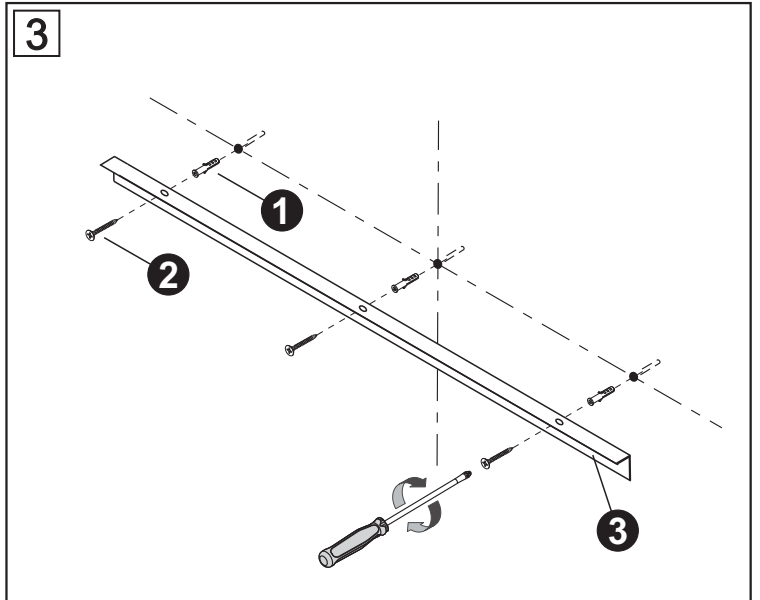
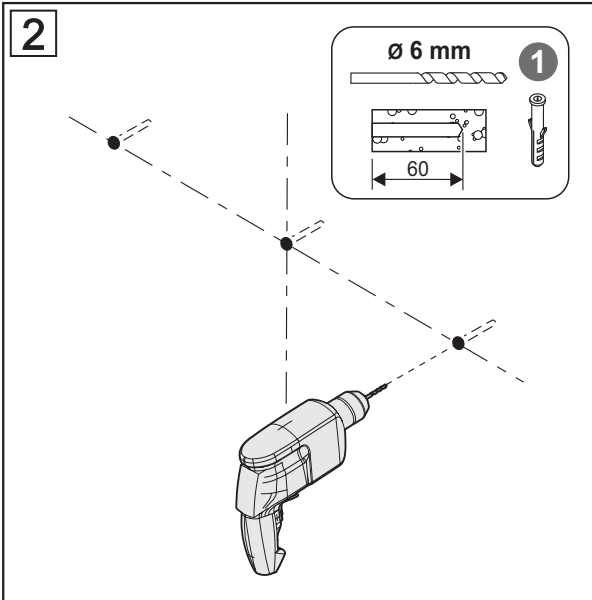


Grande small 40

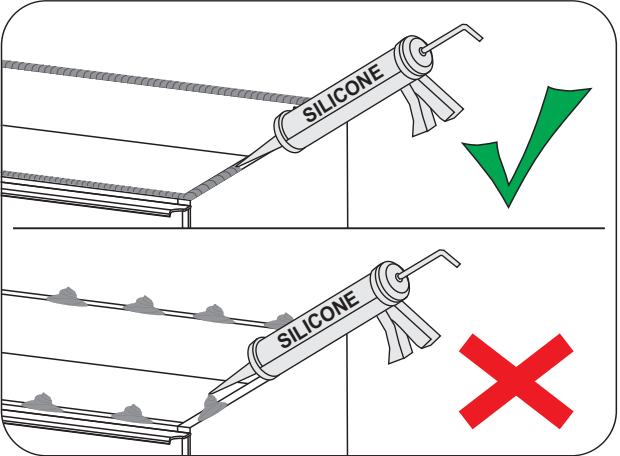
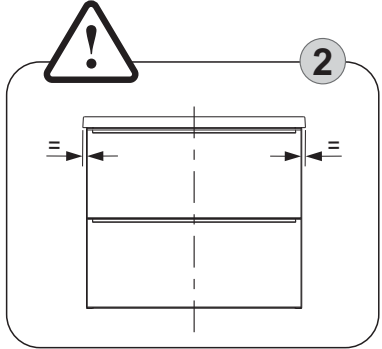
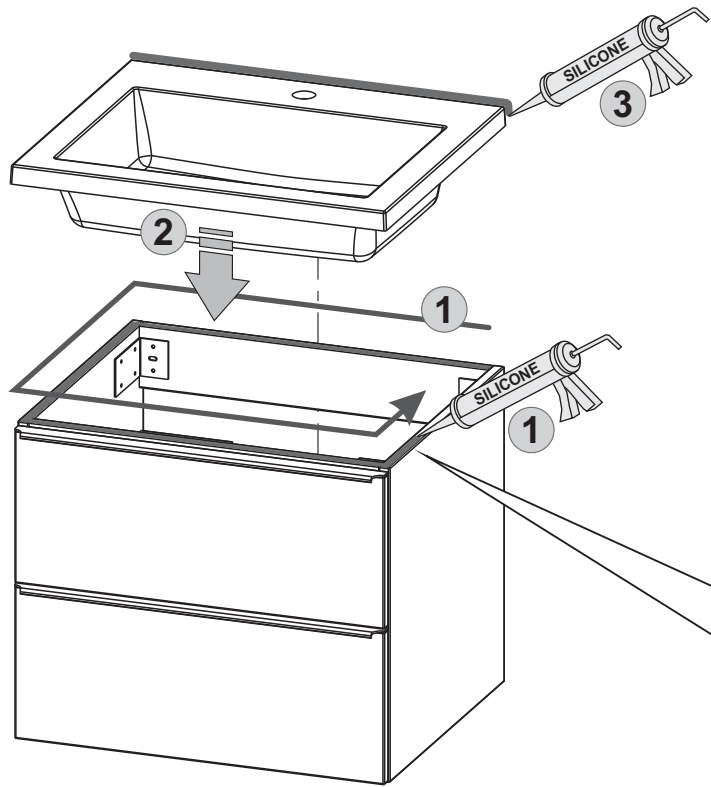
\*\*325  
\*\*340

\*\*355  
\*\*370

\*\* ZA UKUPNU VISINU ORMARIĆA  
S UMIVAONIKOM 900 mm  
ZA SKUPNO VIŠINO OMAR  
Z UMIVALNIKOM 900 mm

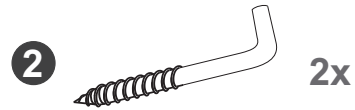
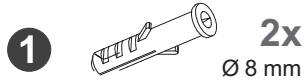


7

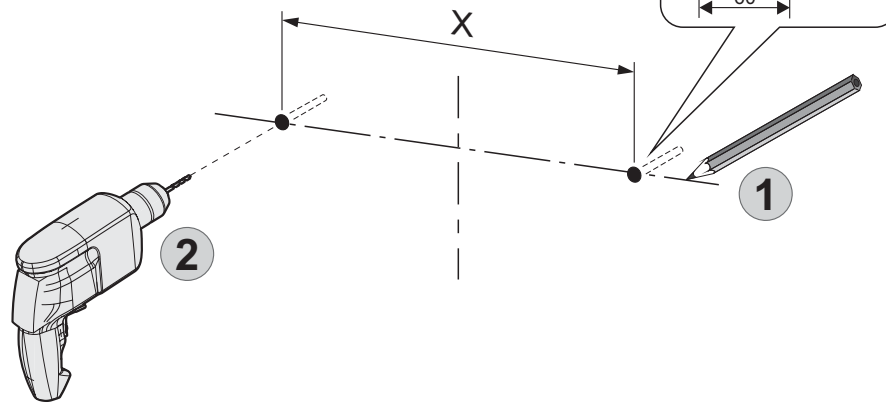
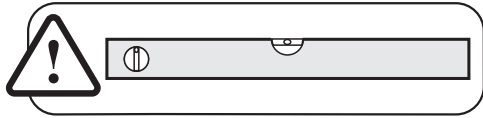


**UPOZORENJE:**  
Nanesite silikon na cijelu površinu!  
Uklonite višak sa strane.

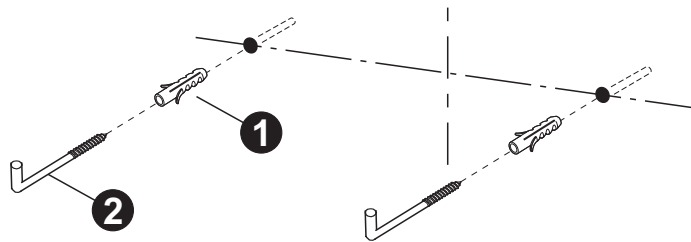
**OPOZORILO:**  
Nanesite silikon po celotni površini!  
Odstranite presežek s strani.



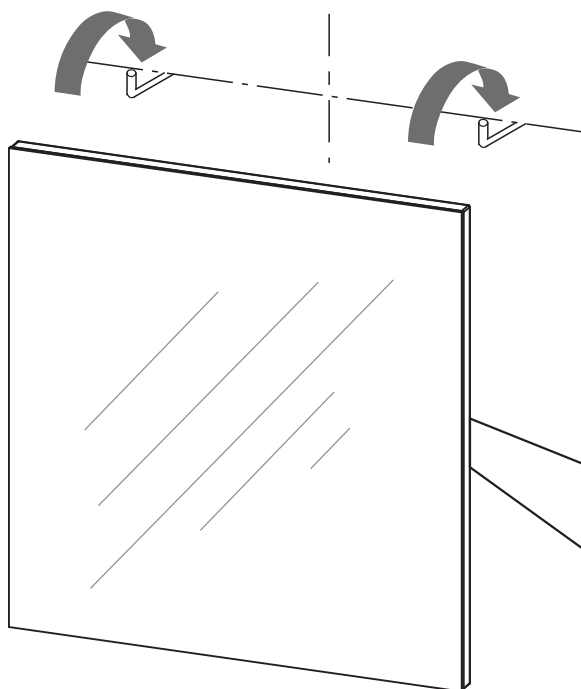
**1**



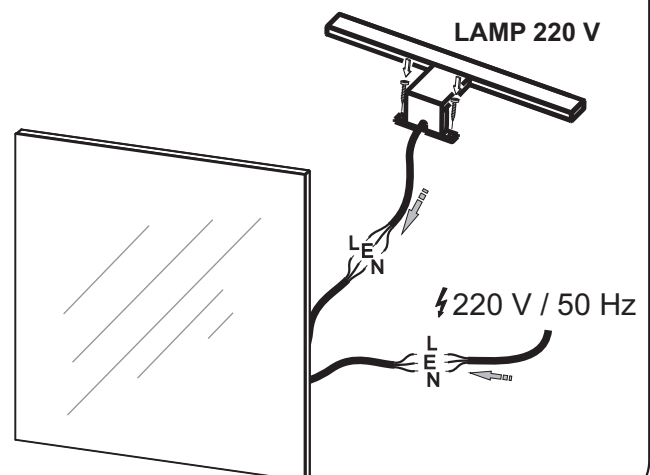
**2**

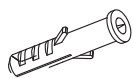
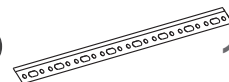
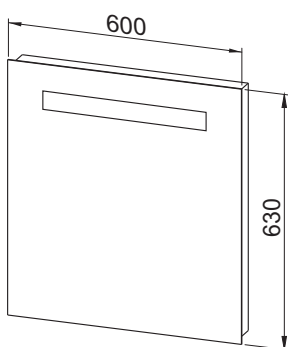
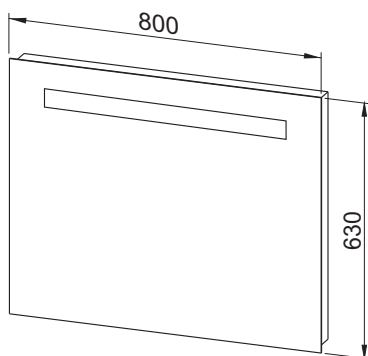
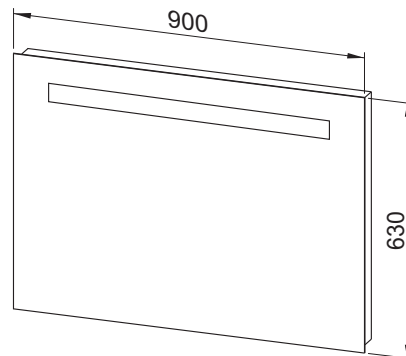
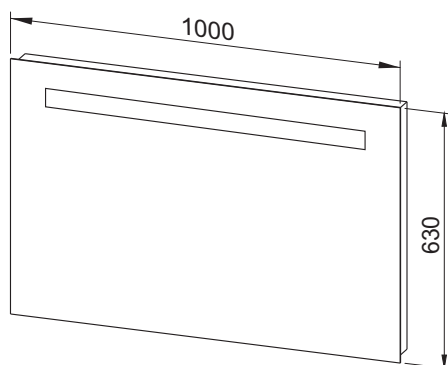
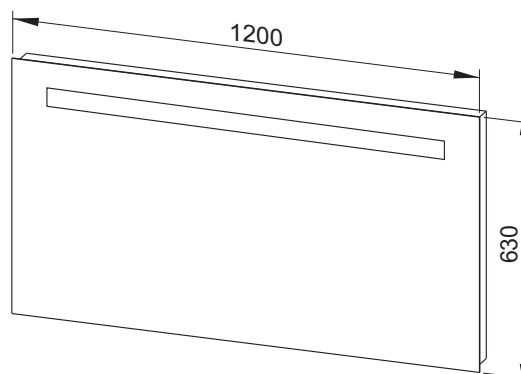
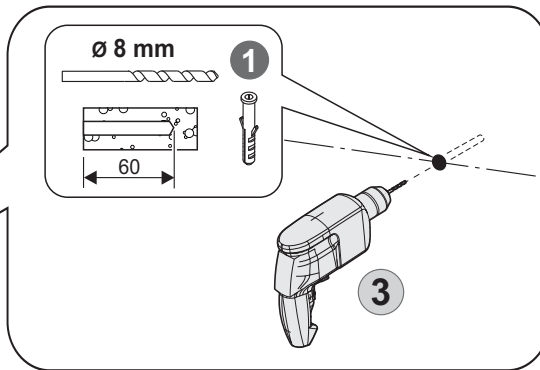
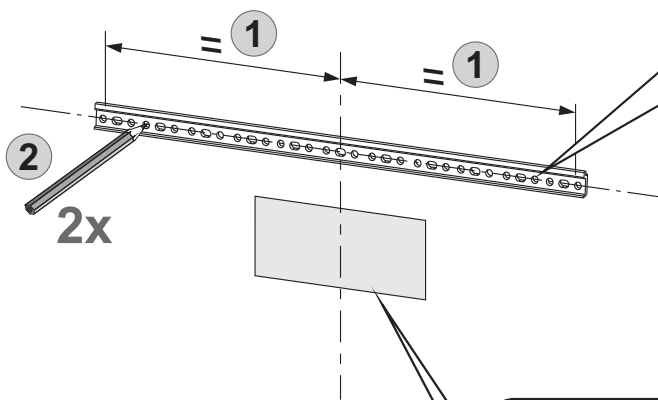
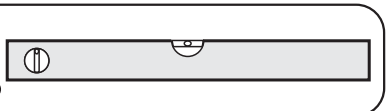


**3**

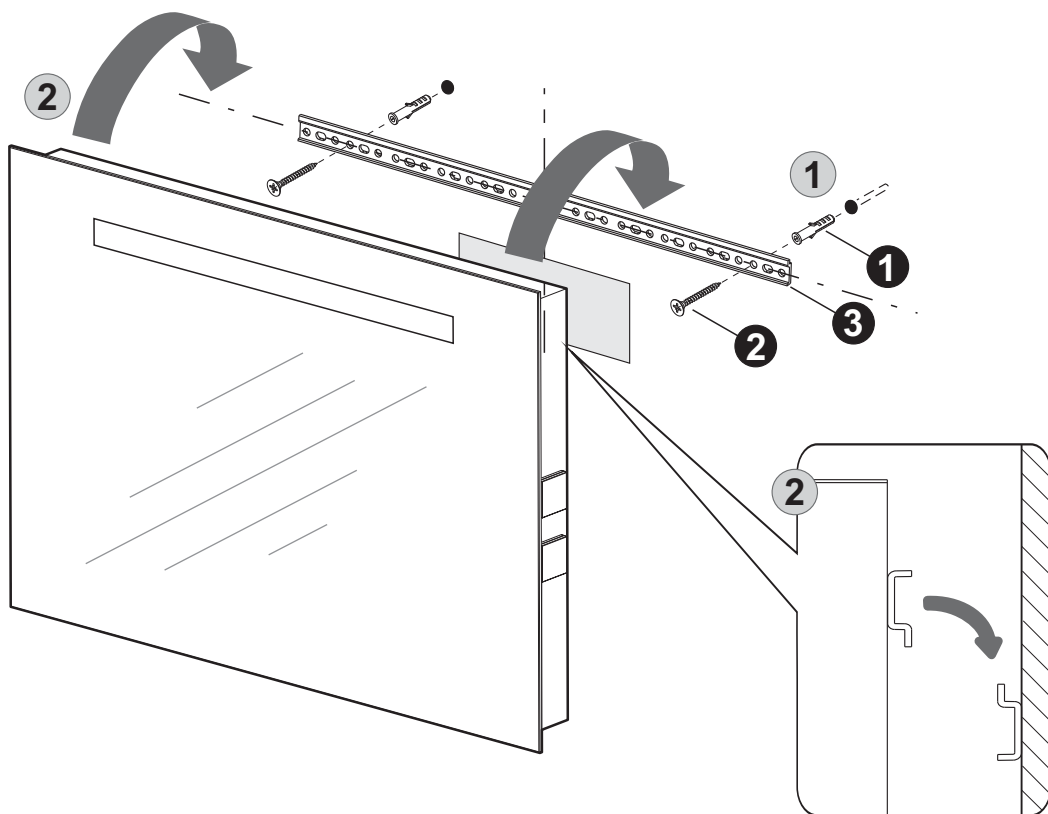


**\* Samo za ogledalo na poledini**  
**Samo za ogledalo na hrbtni strani**

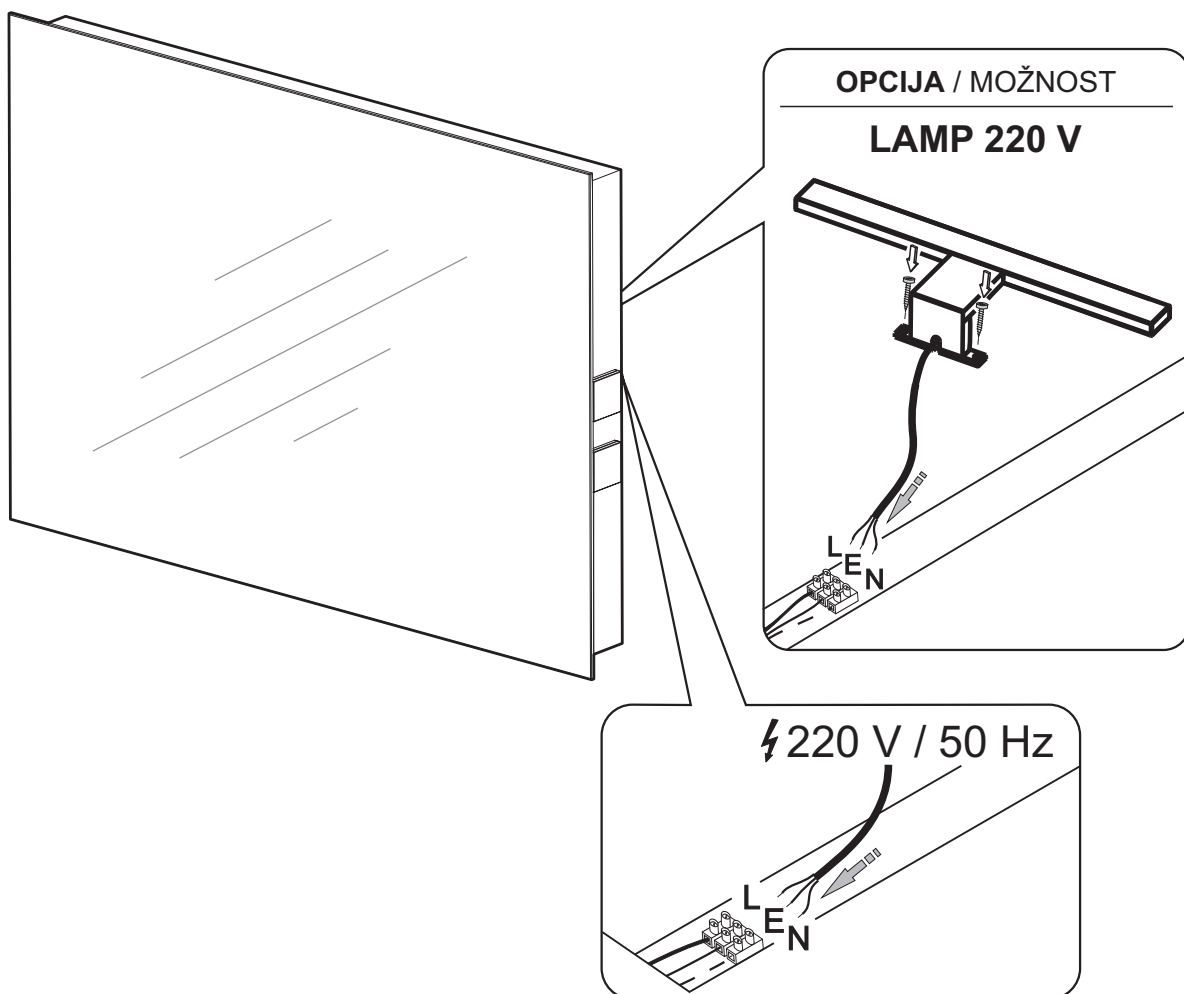


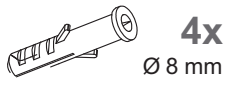
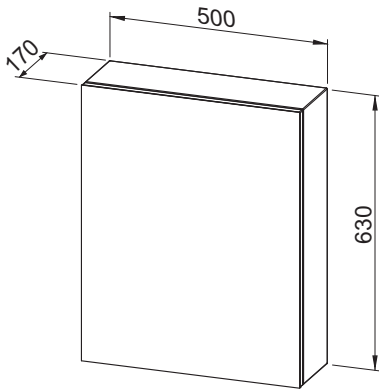
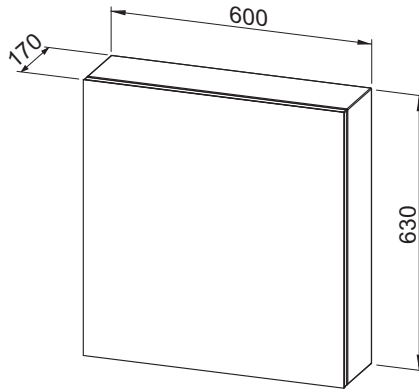
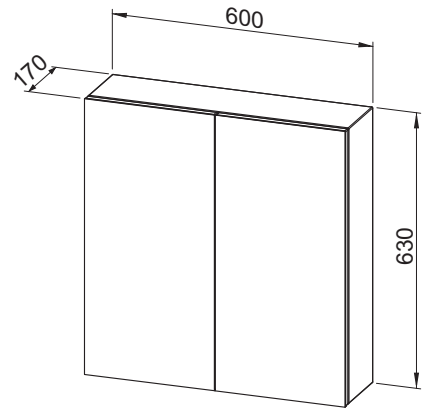
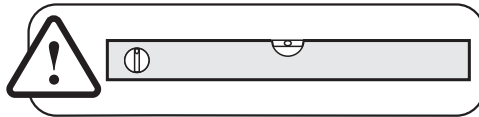
**1****2x**  
Ø 8 mm**2****2x**  
Ø 5x50 mm**3****1x****Ogledalo 60****Ogledalo 80****Ogledalo 90****Ogledalo 100****Ogledalo 120****1****3 x 1,5 mm<sup>2</sup>**  
**220 V, 50 Hz****Osigurati instalaciju zaštitnim uređajem**  
**diferencijalne struje (FID - sklopka)**  
Zagotovite instalaciju z zaščitno napravo  
diferenčnega toka (RCCB stikalo)

2

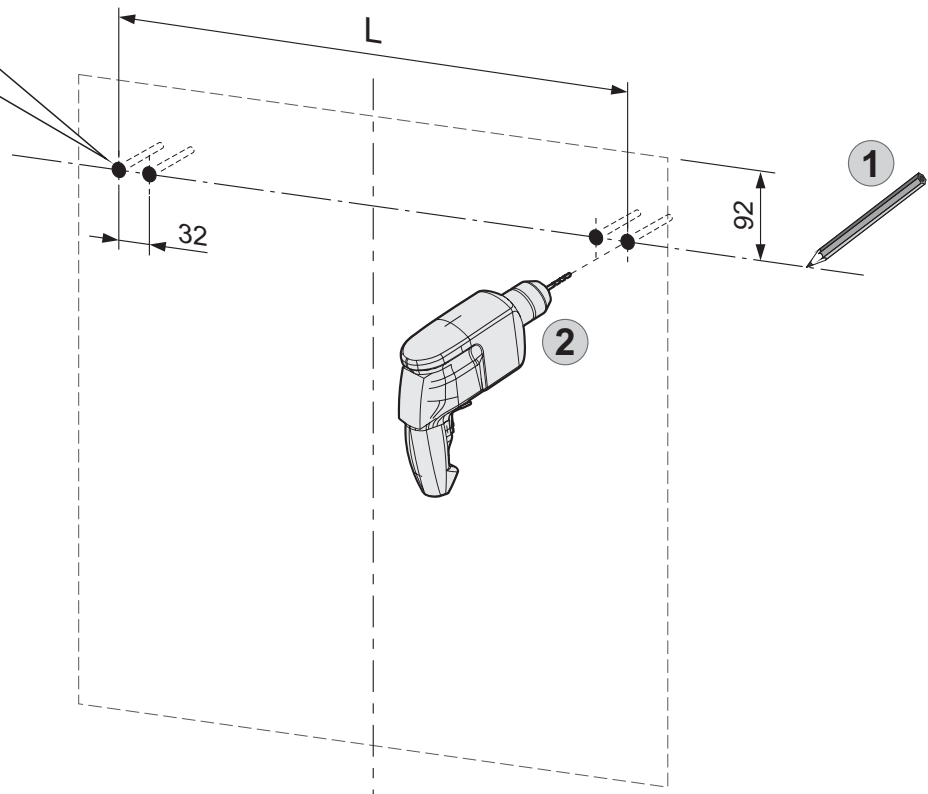
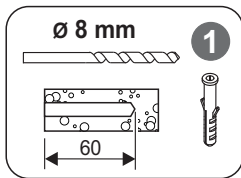


3



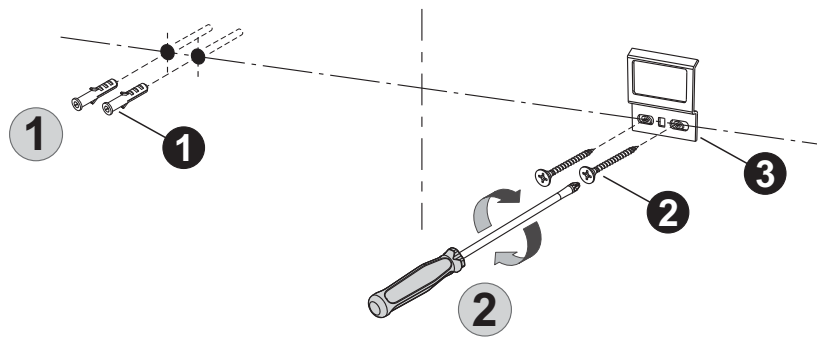
**1****2****3****Ogledalo 50****Ogledalo 60****Ogledalo 60****1**

Ogledalo	L (mm)
50	420
60	520

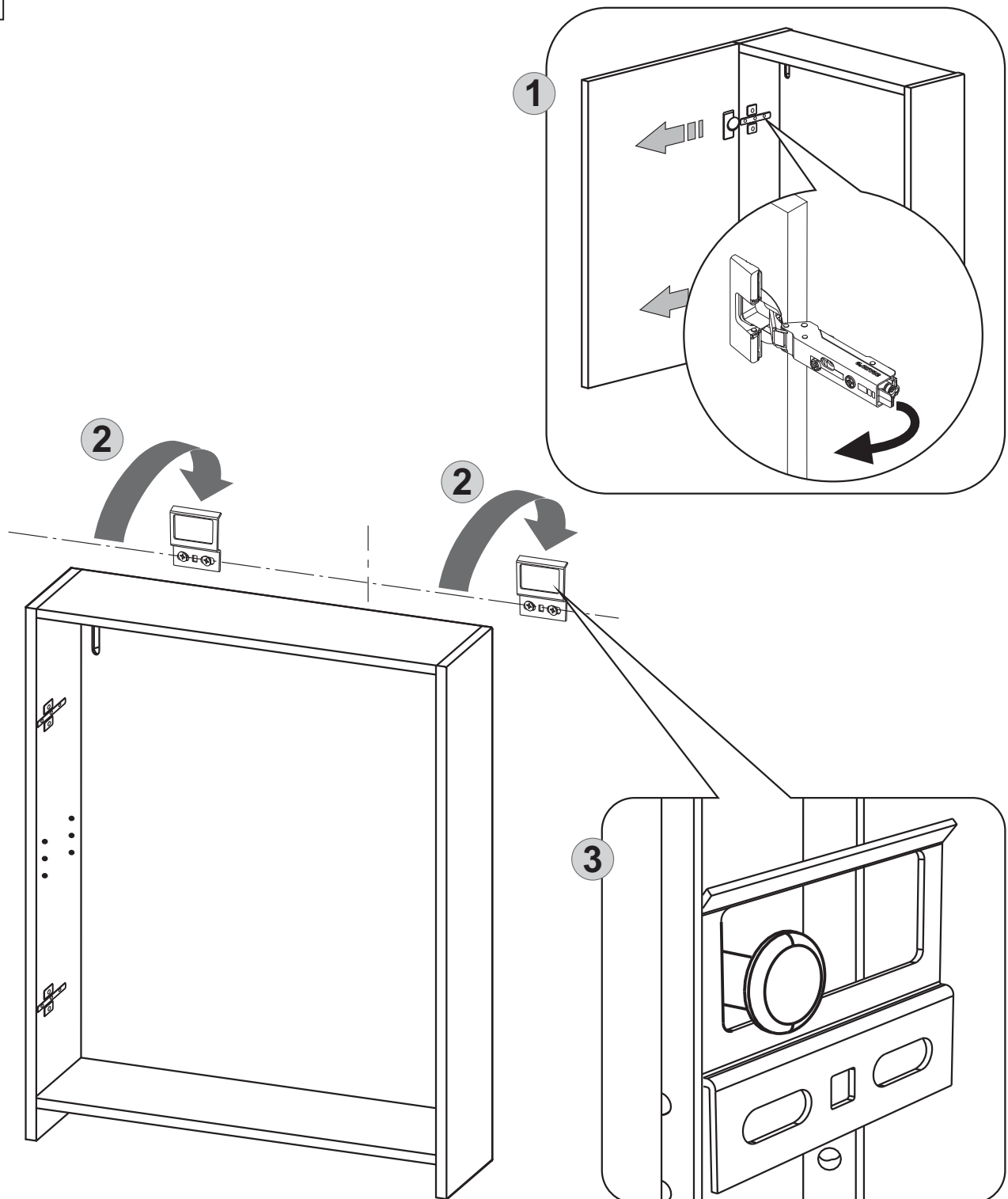


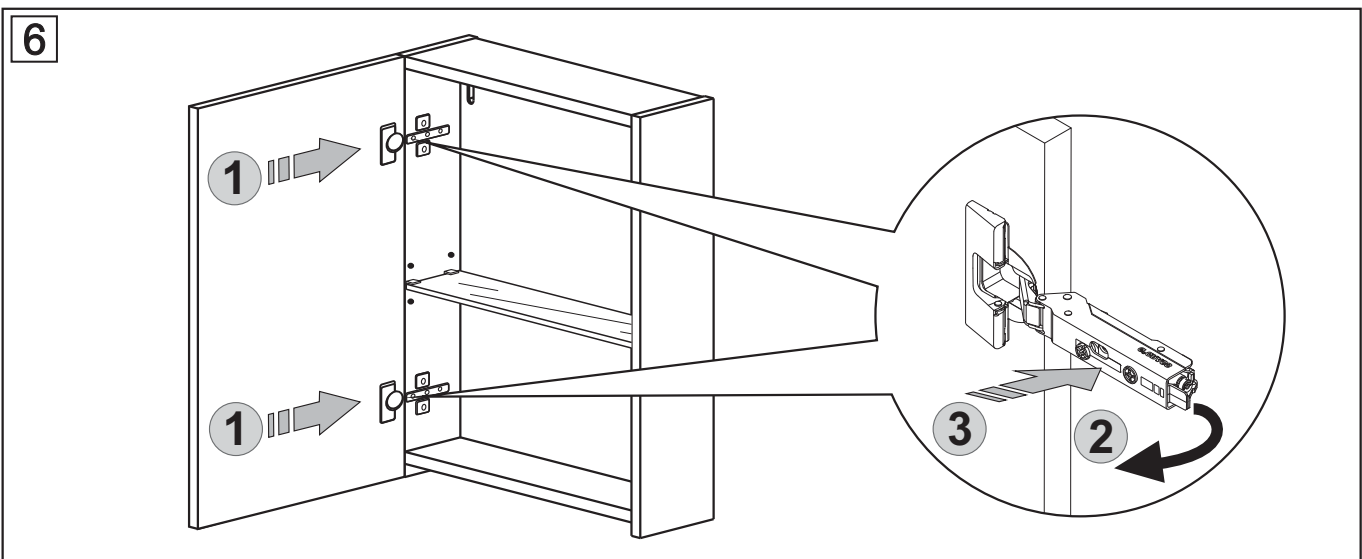
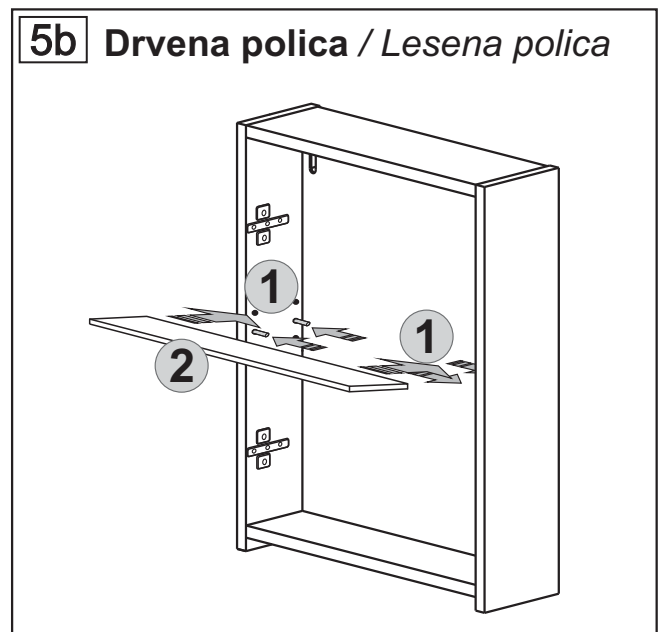
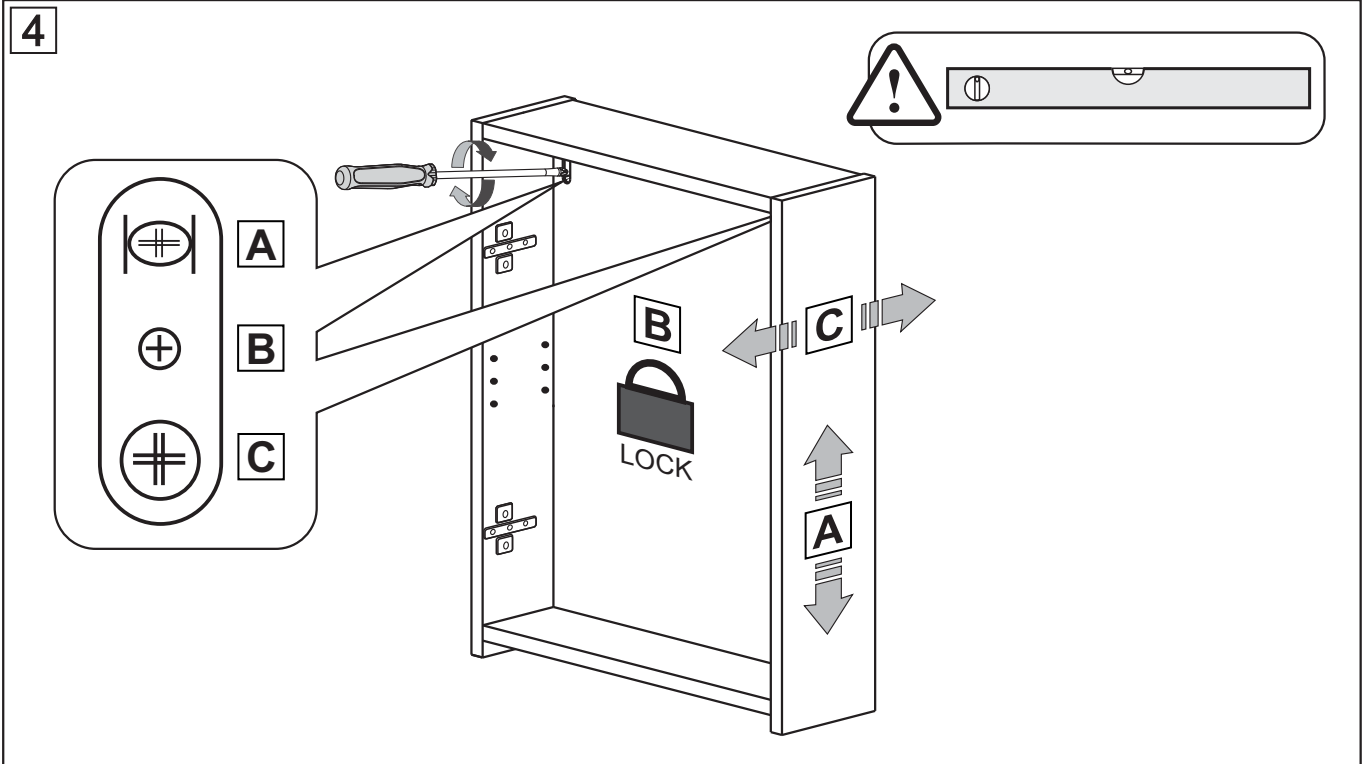


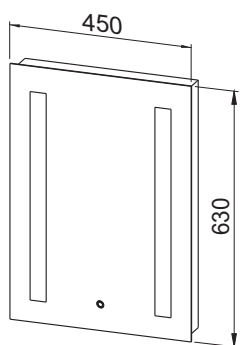
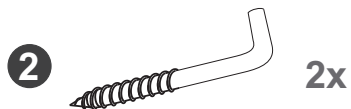
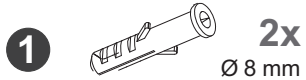
2



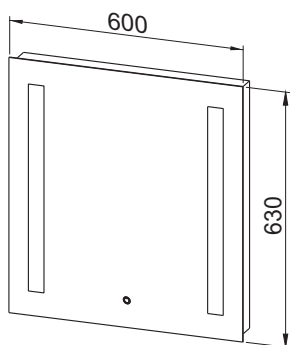
3



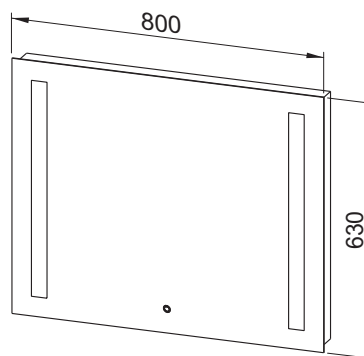




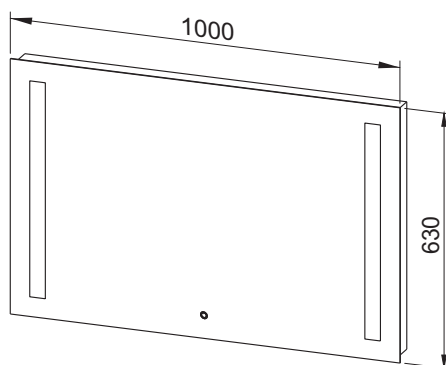
**Ogledalo 45**



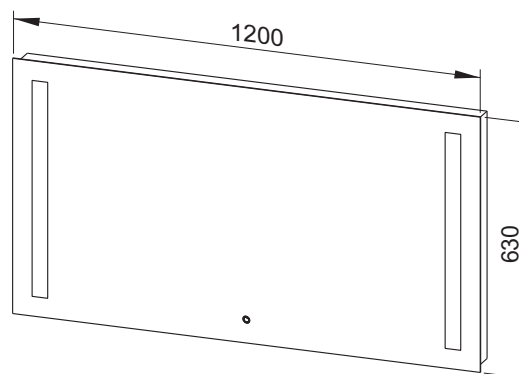
**Ogledalo 60**



**Ogledalo 80**

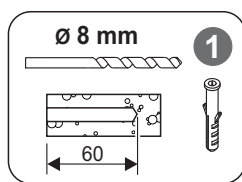
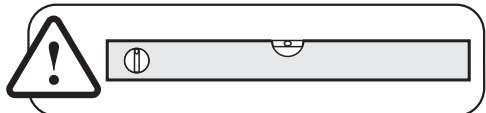


**Ogledalo 100**

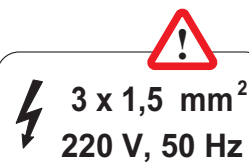
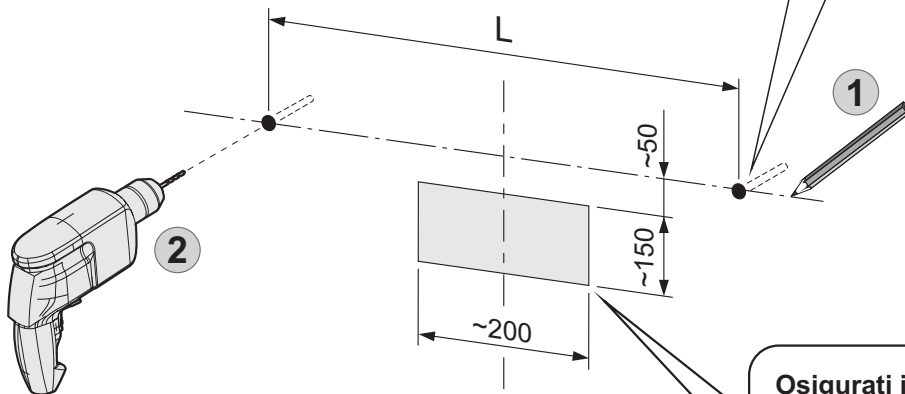


**Ogledalo 120**

**1**

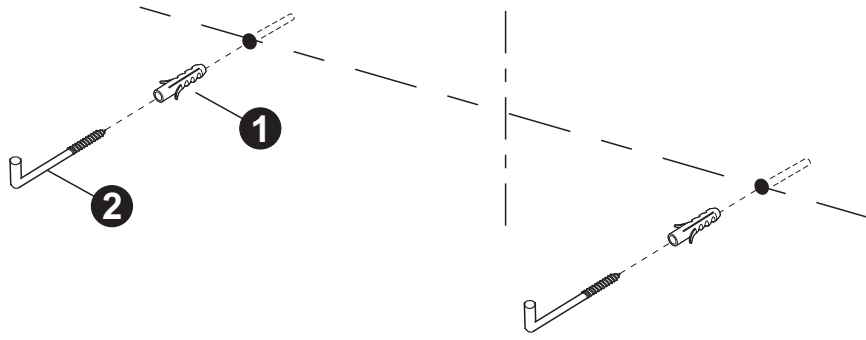


Ogledalo	L (mm)
45	380
60	530
80	730
100	930
120	1130

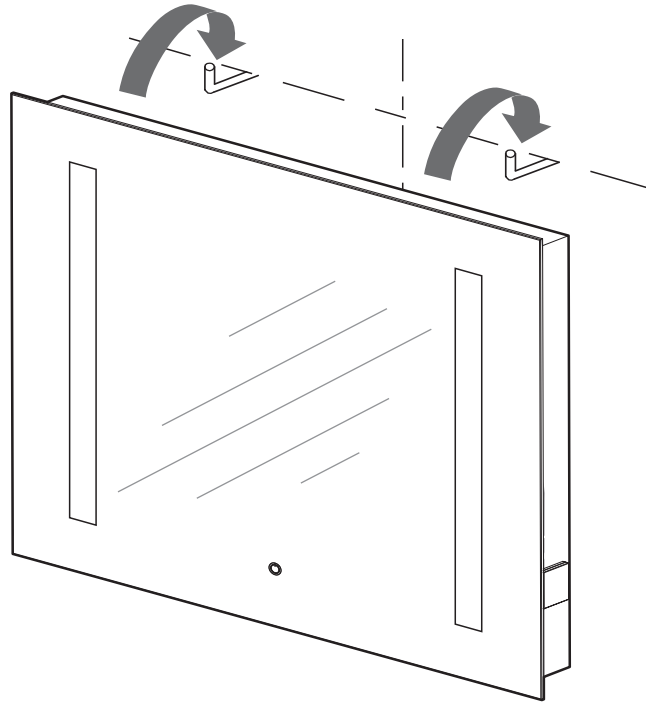


**Osigurati instalaciju zaštitnim uređajem  
diferencijalne struje (FID - sklopka)**  
Zagotovite instalaciju z zaščitno napravo  
diferenčnega toka (RCCB stikalo)

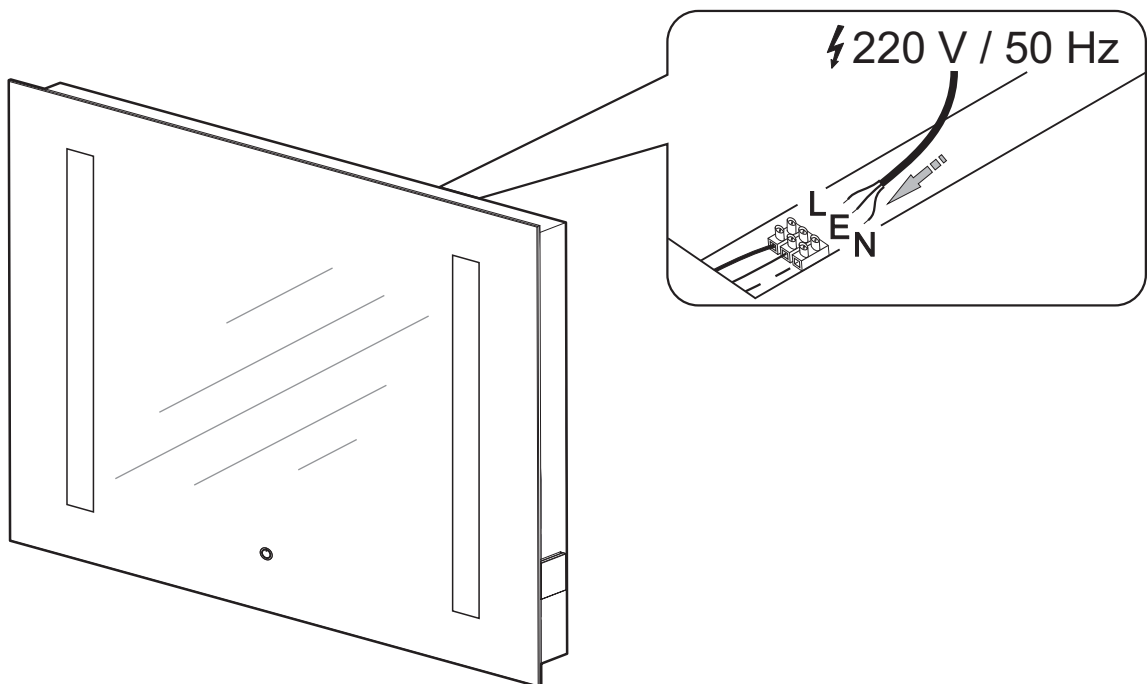
2

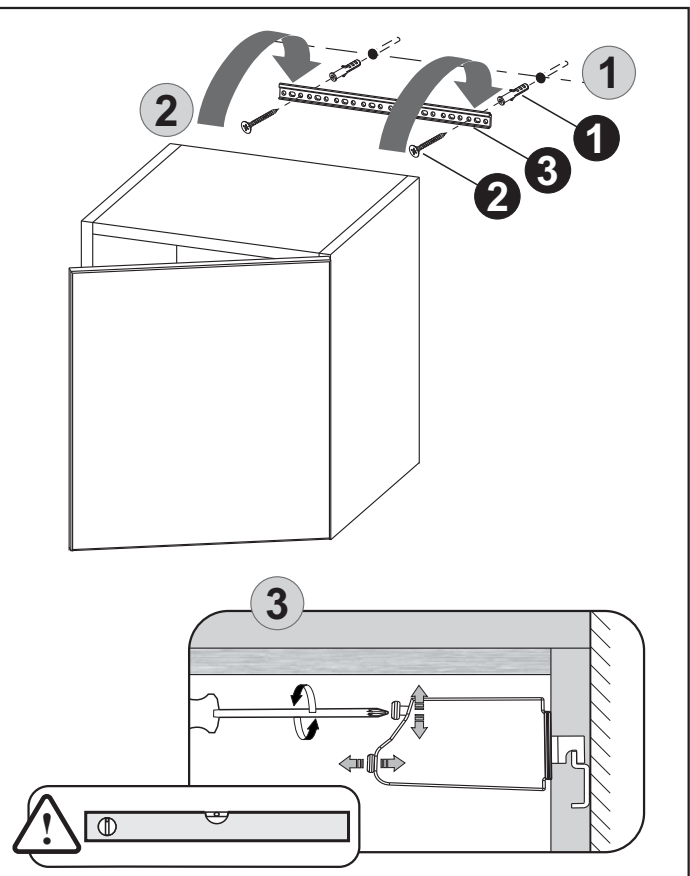
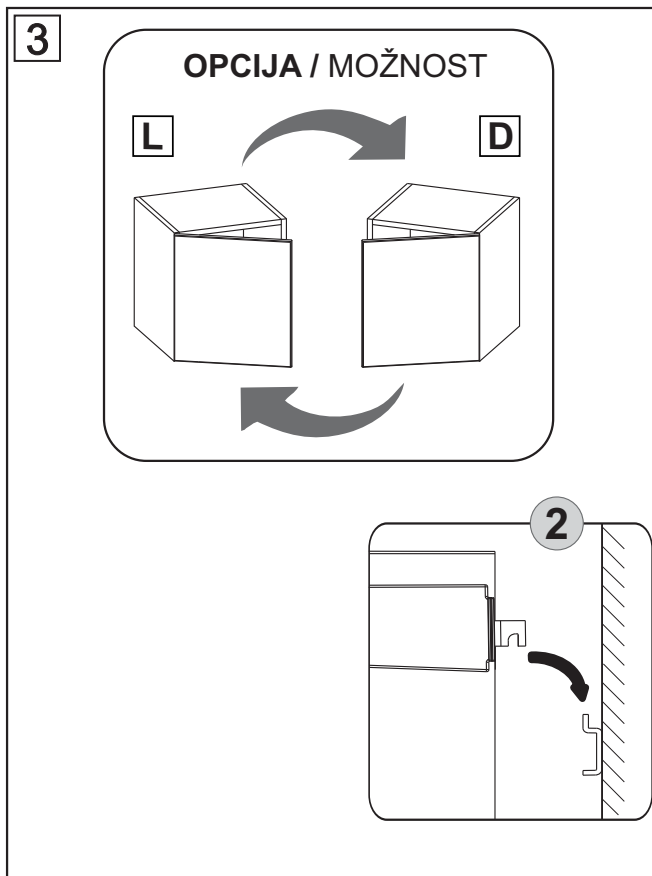
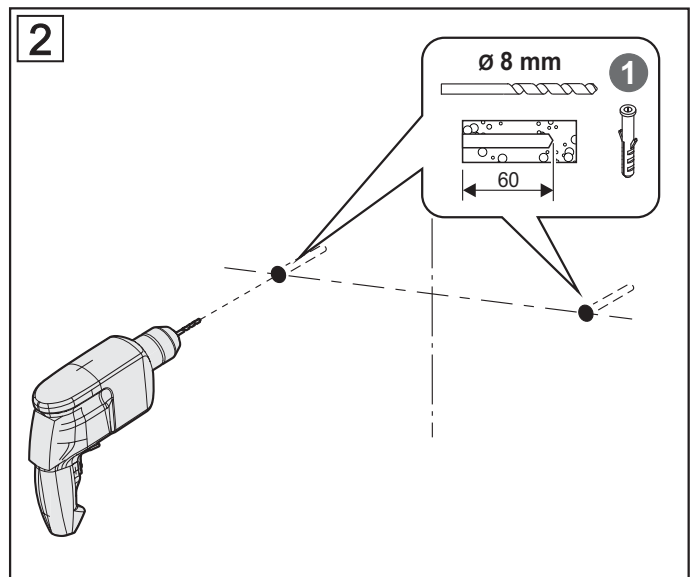
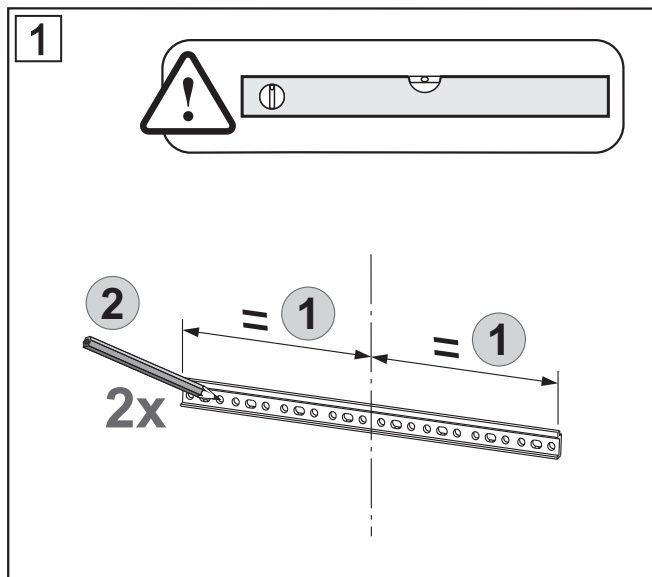
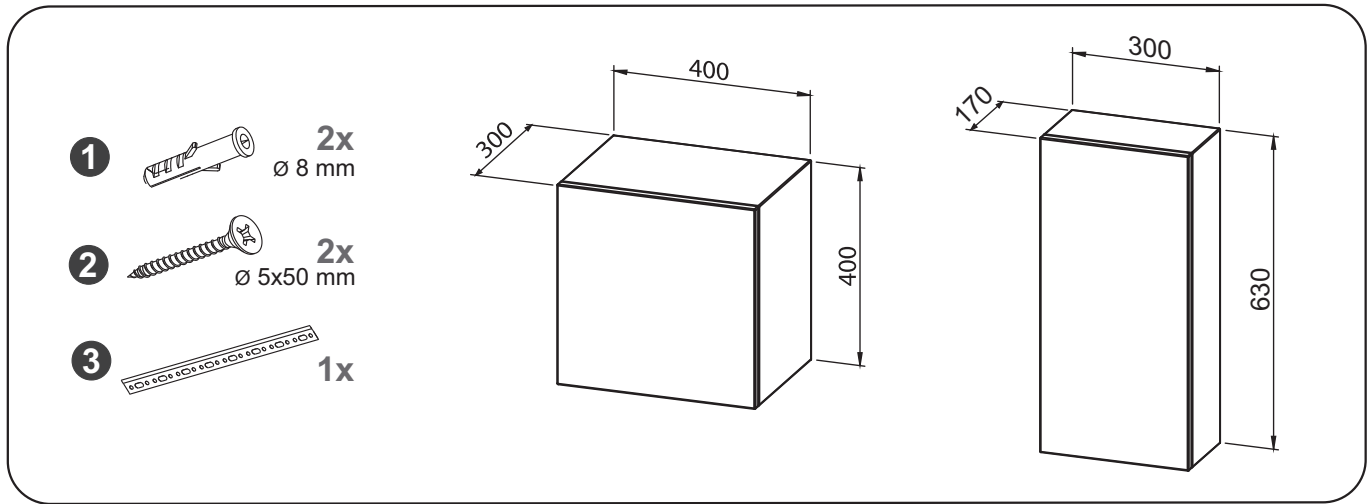


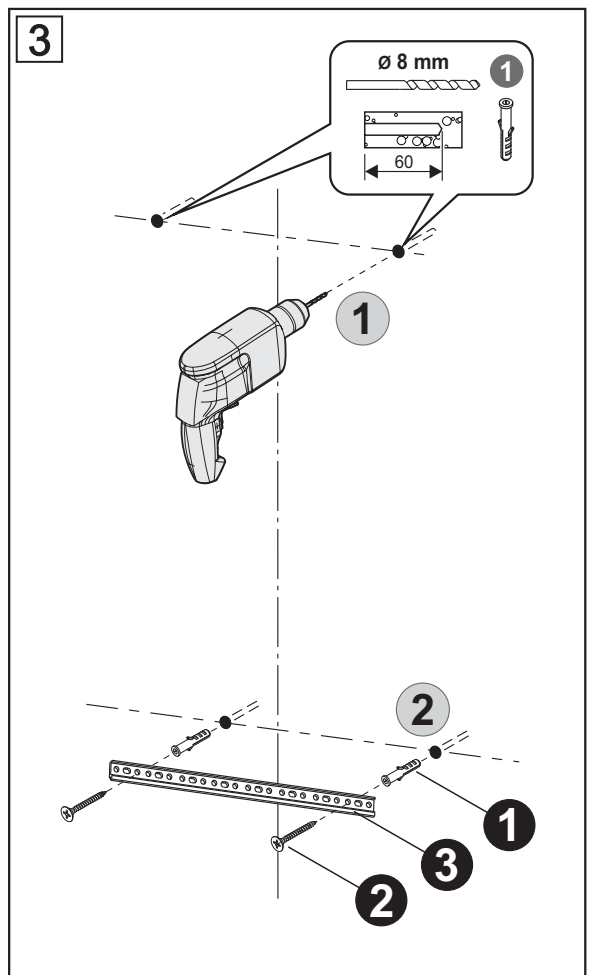
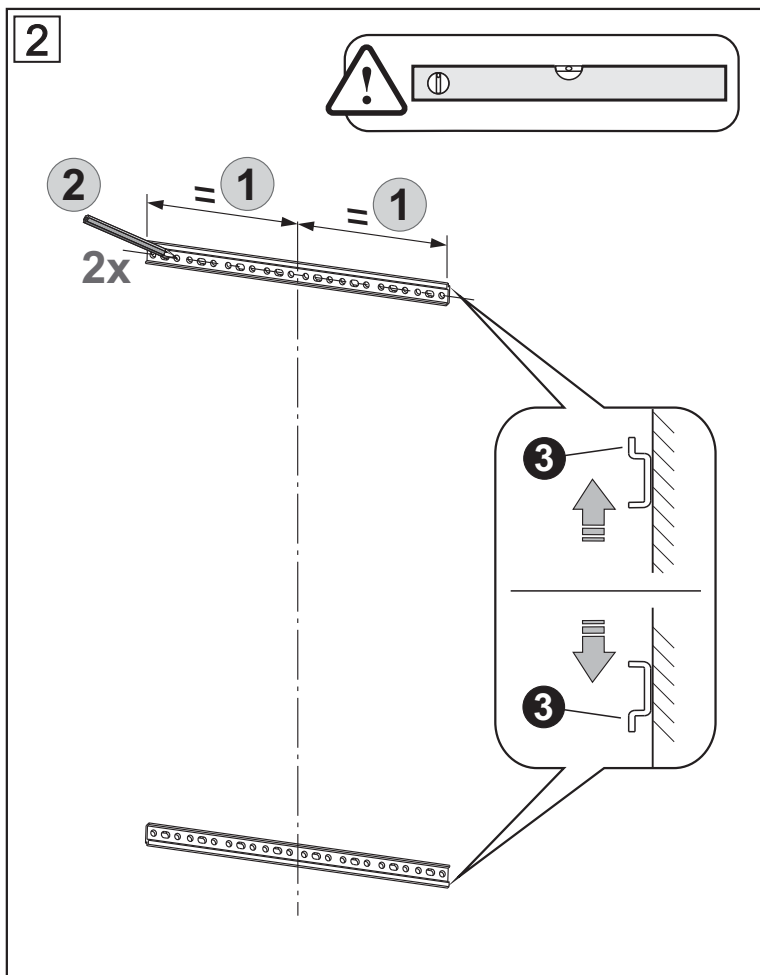
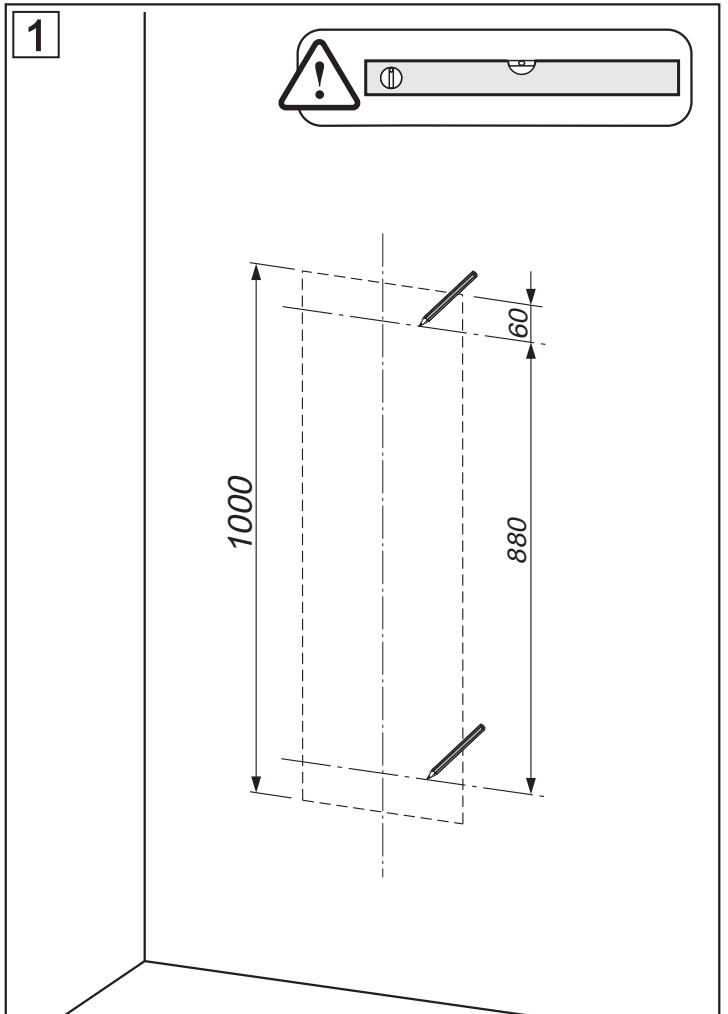
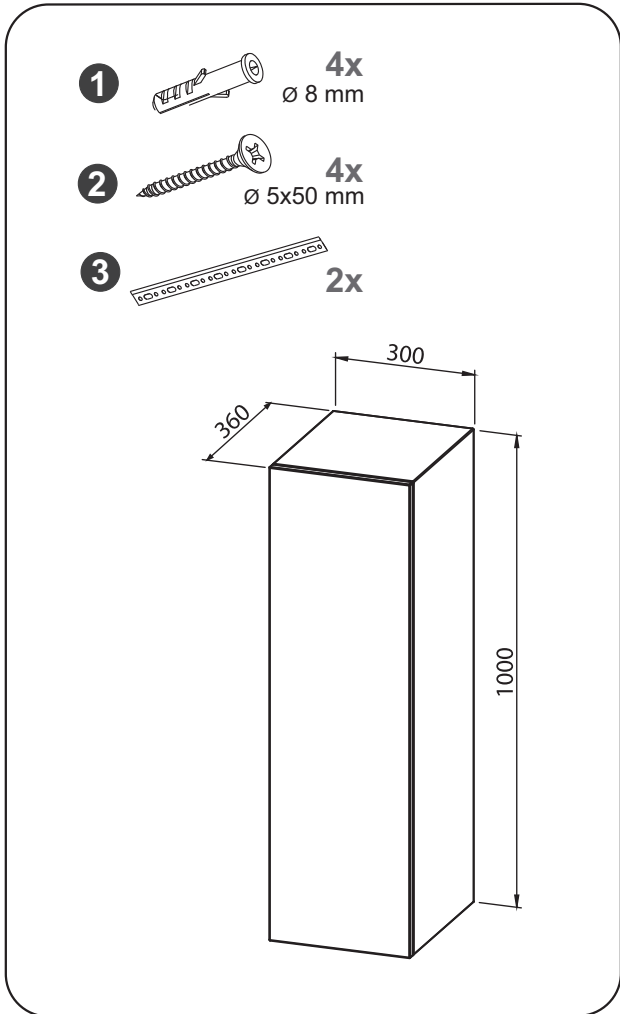
3



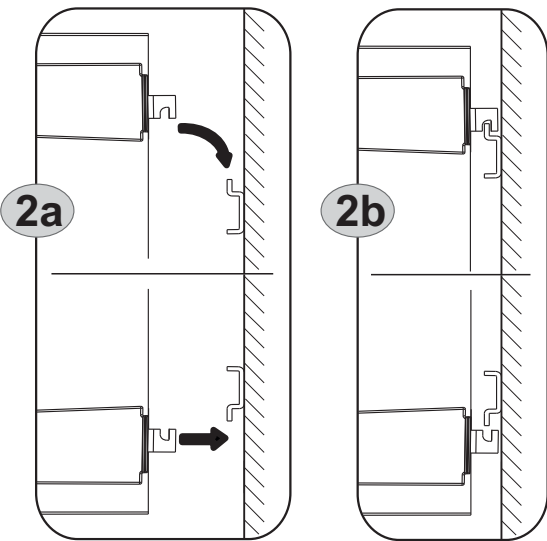
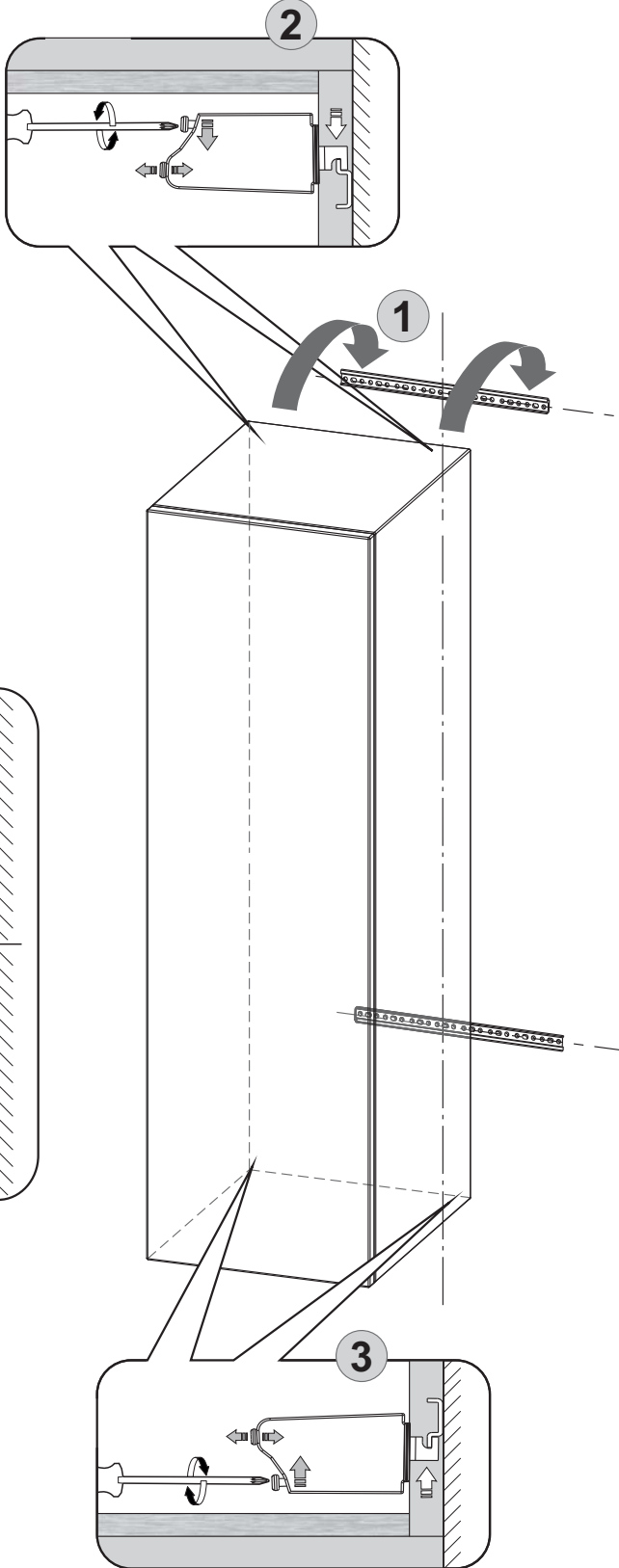
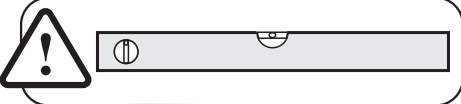
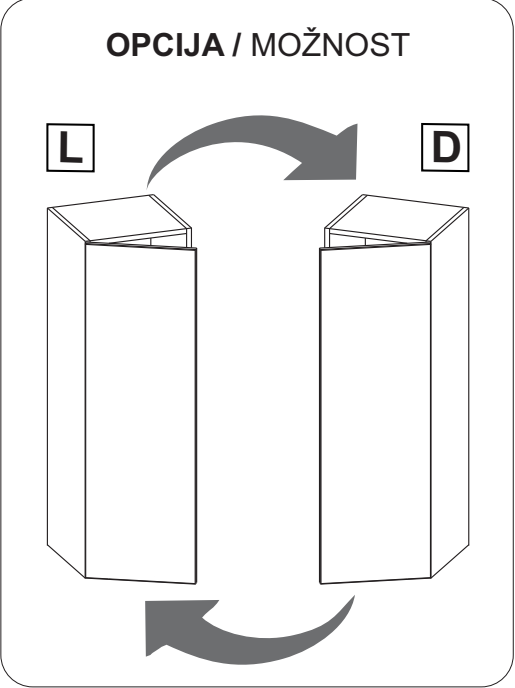
4

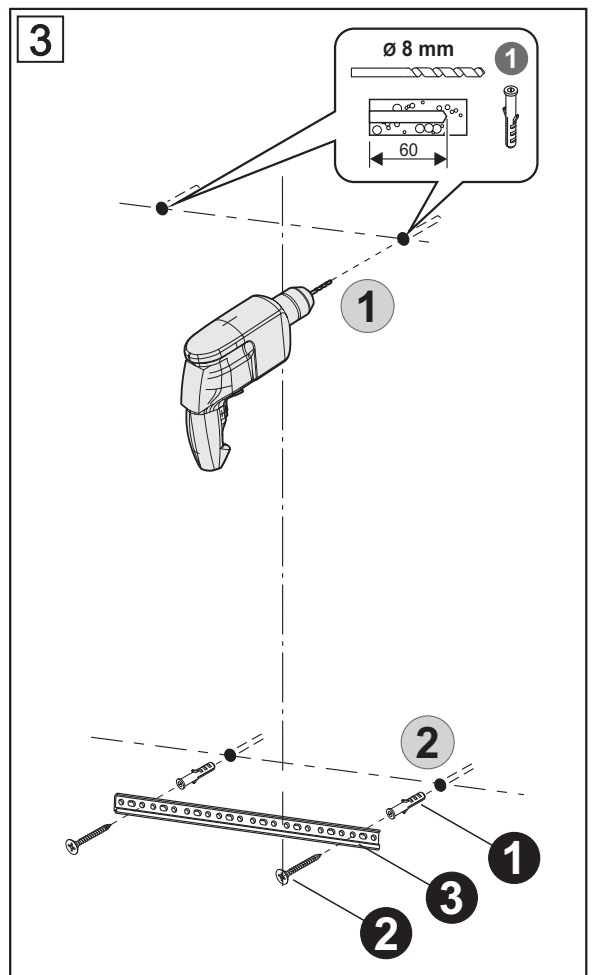
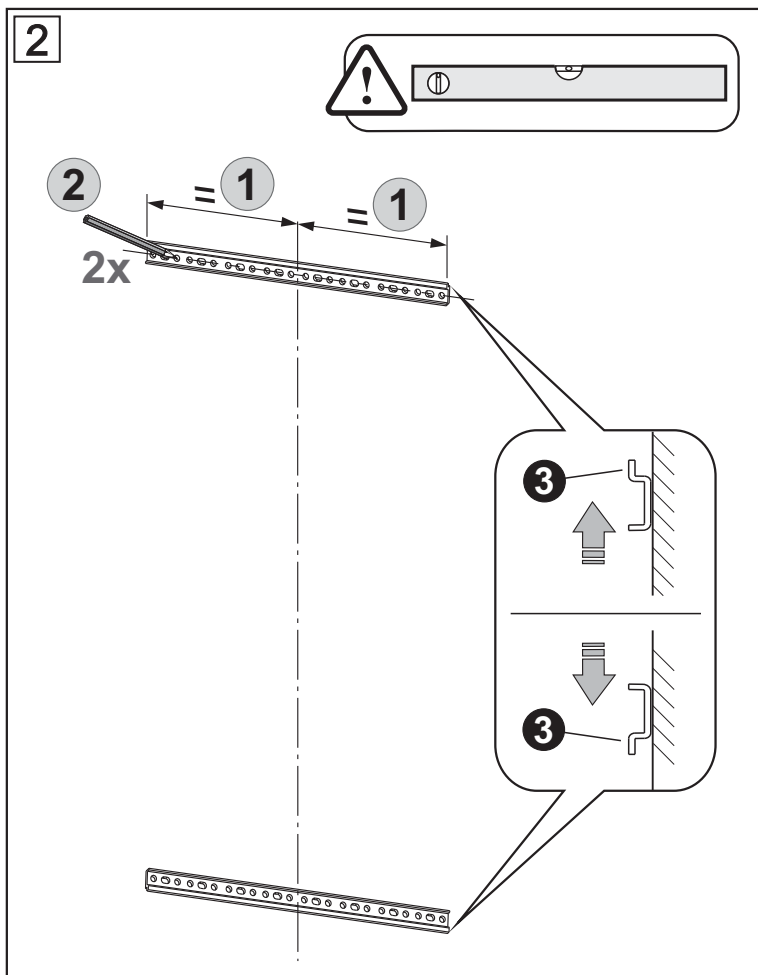
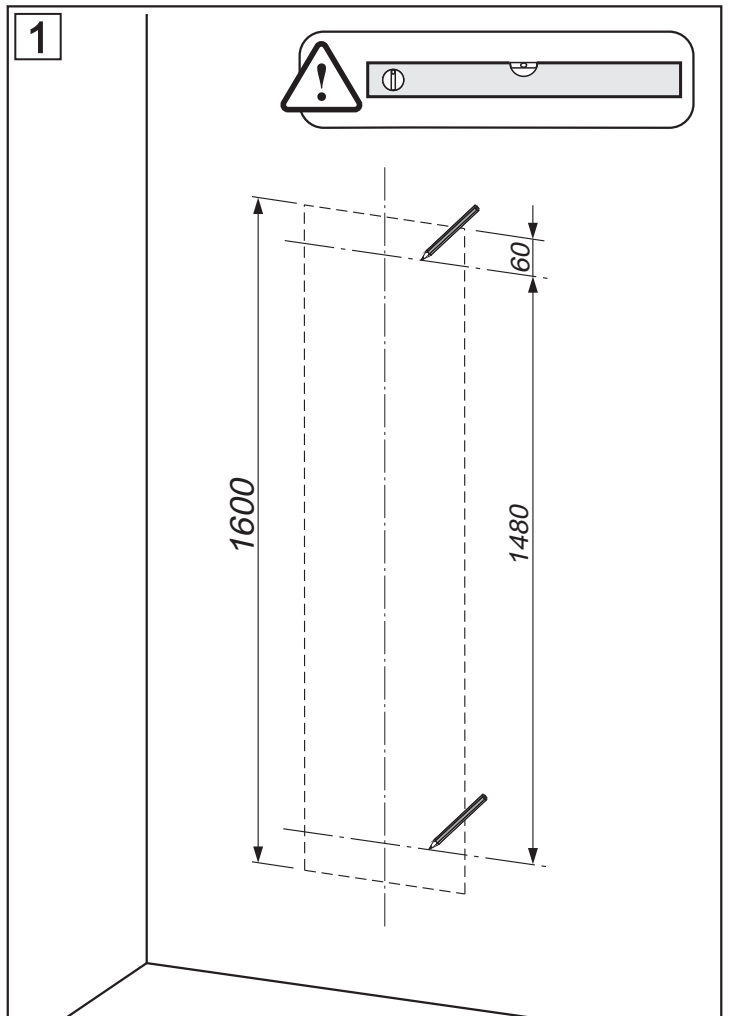
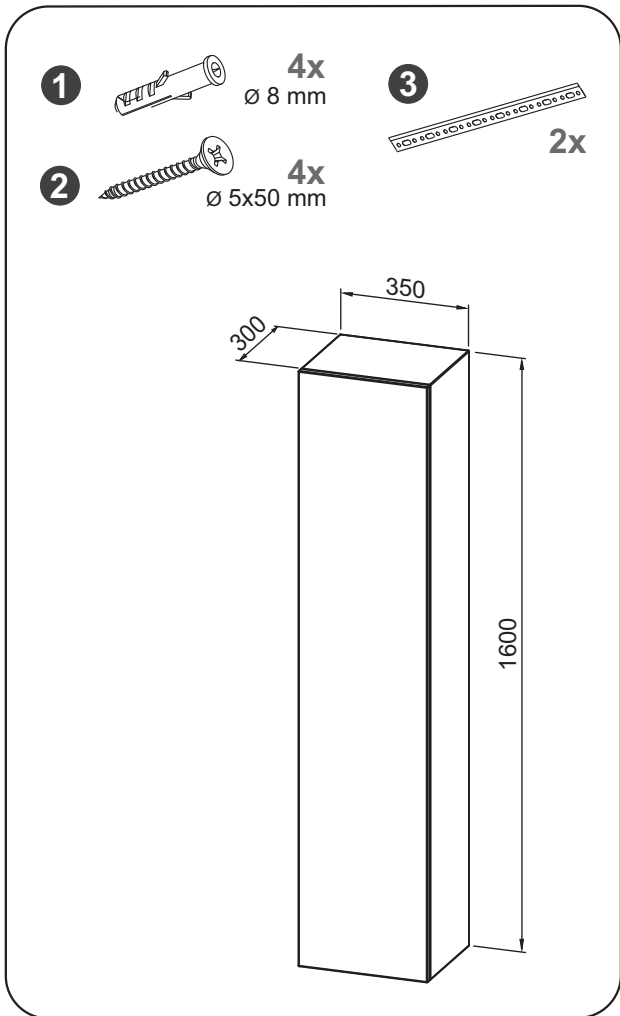






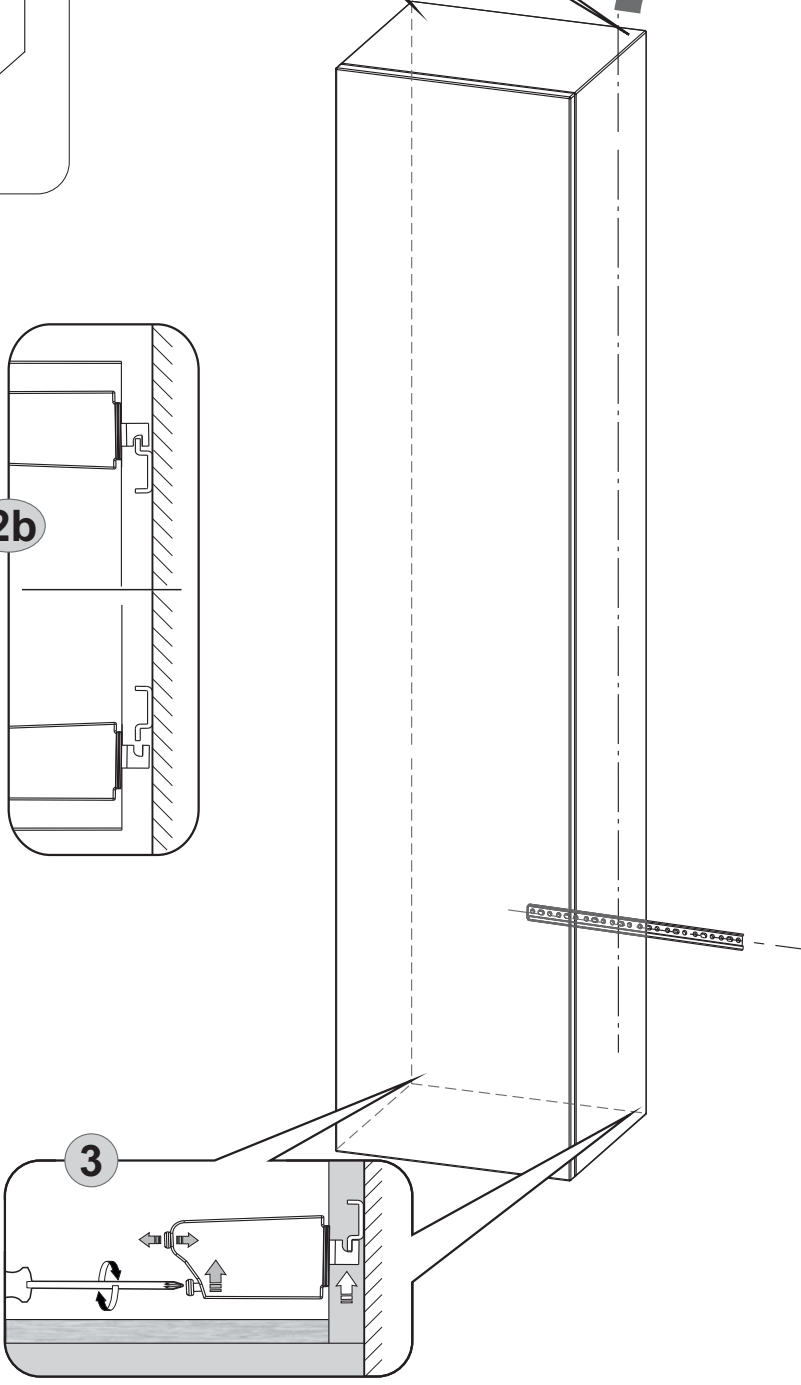
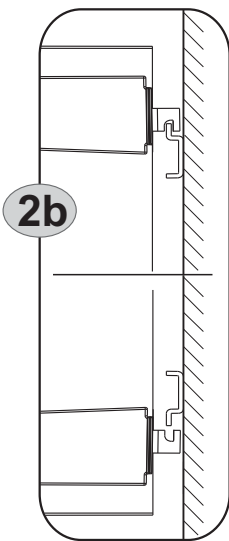
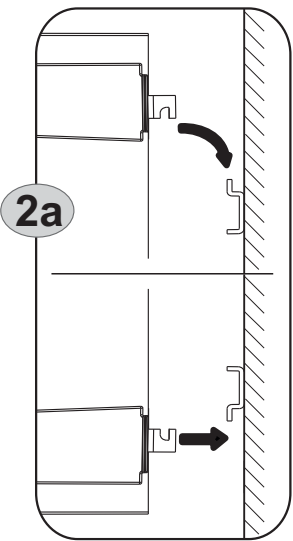
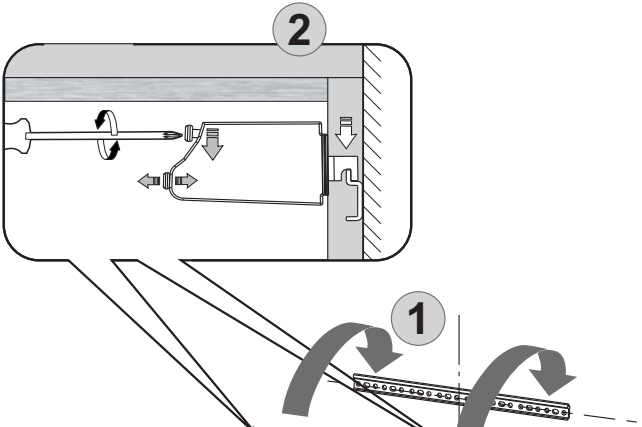
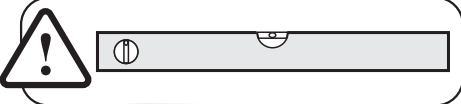
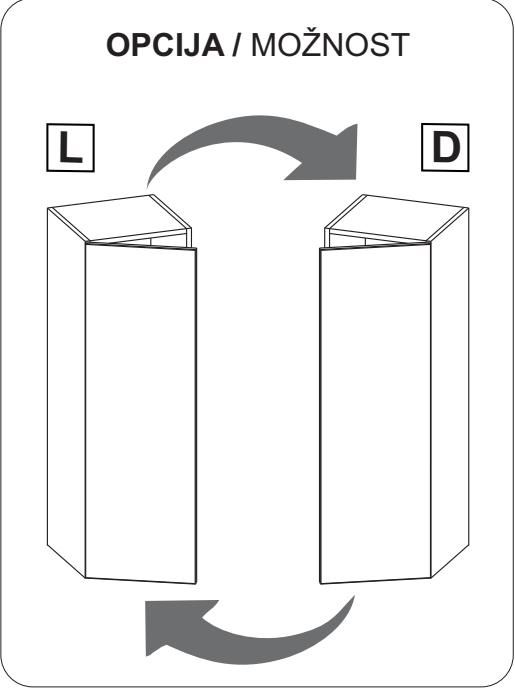
4

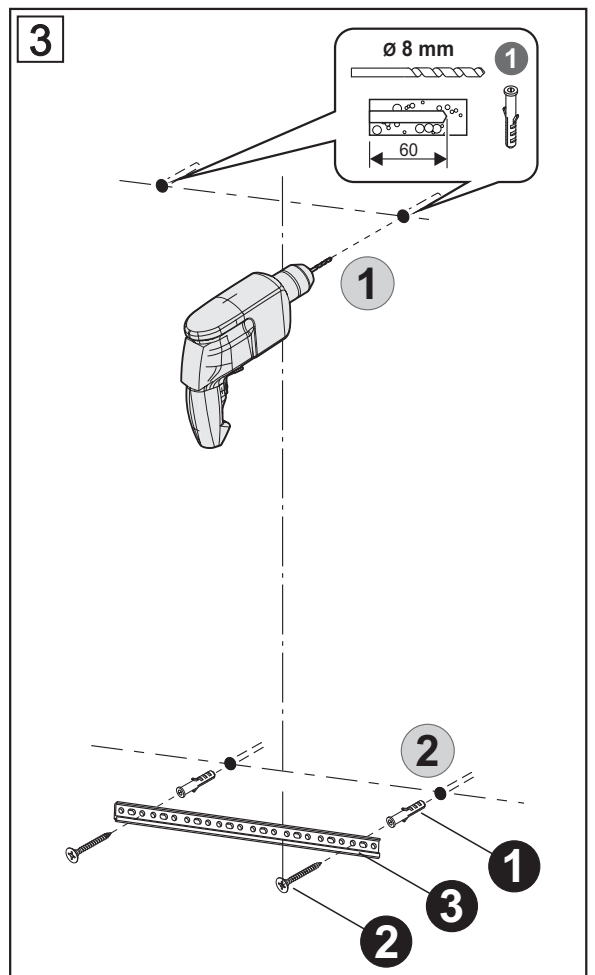
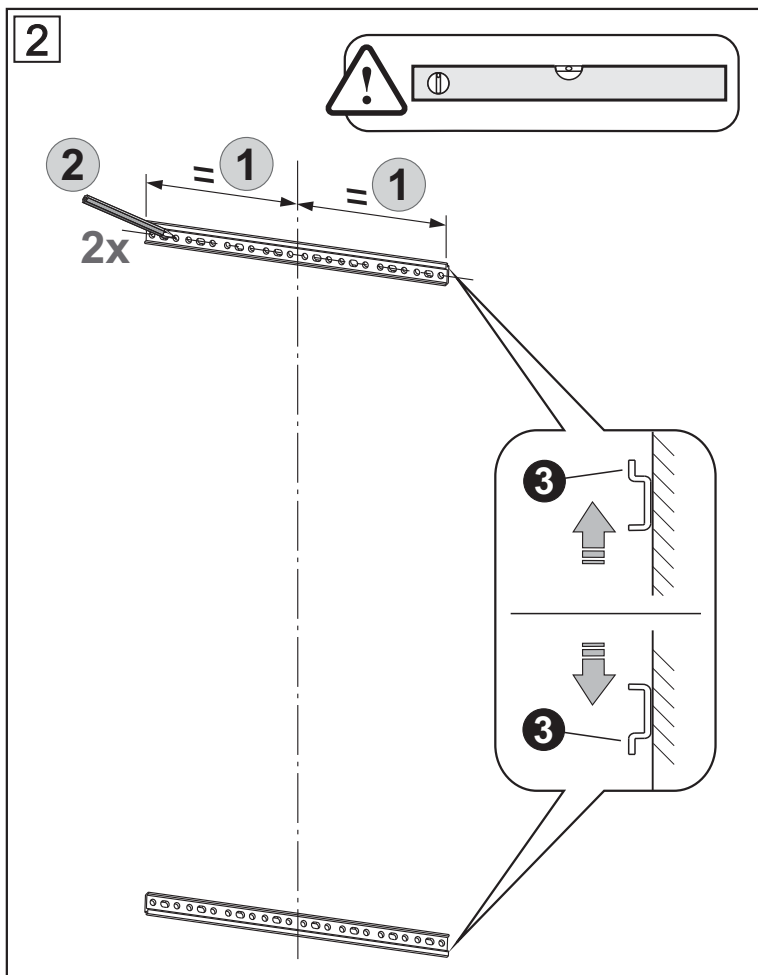
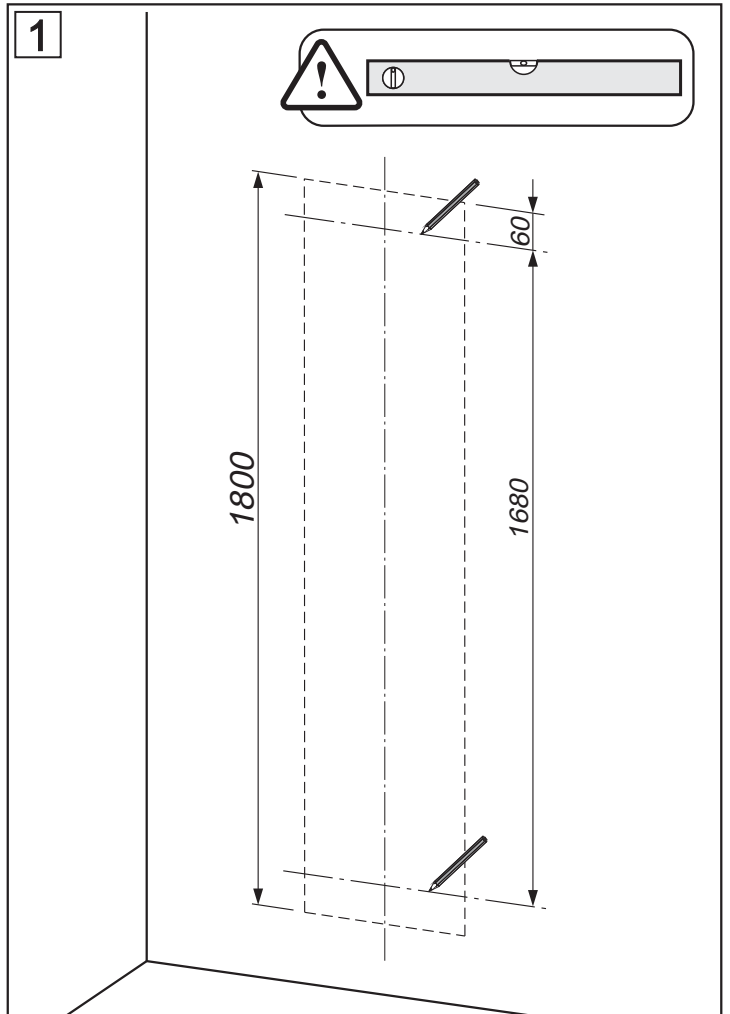
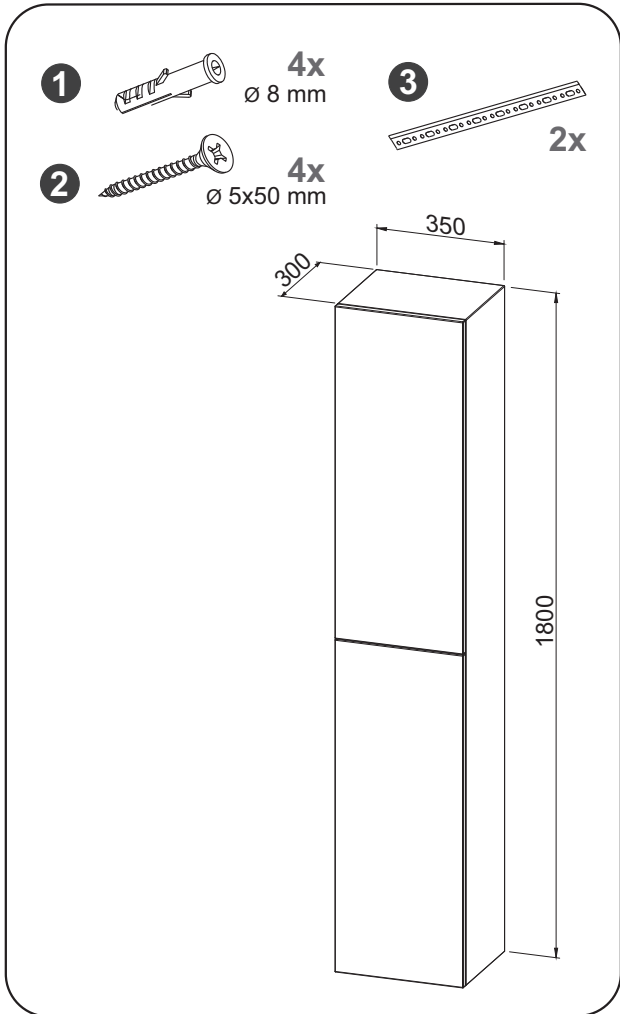




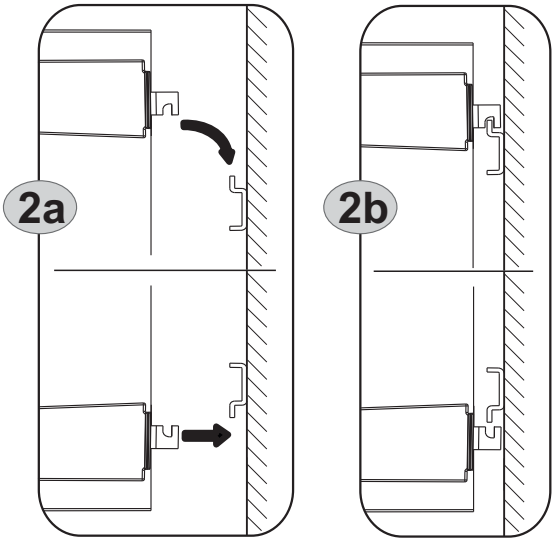
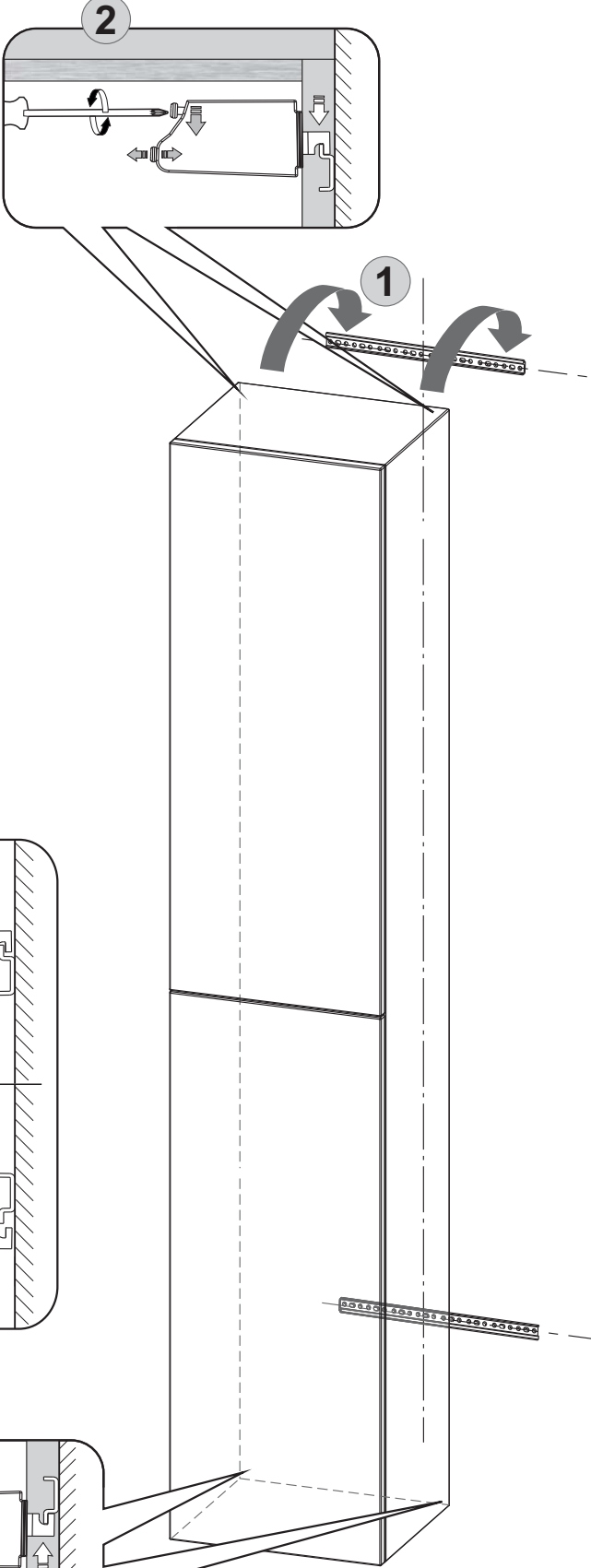
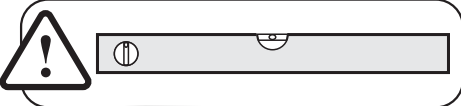
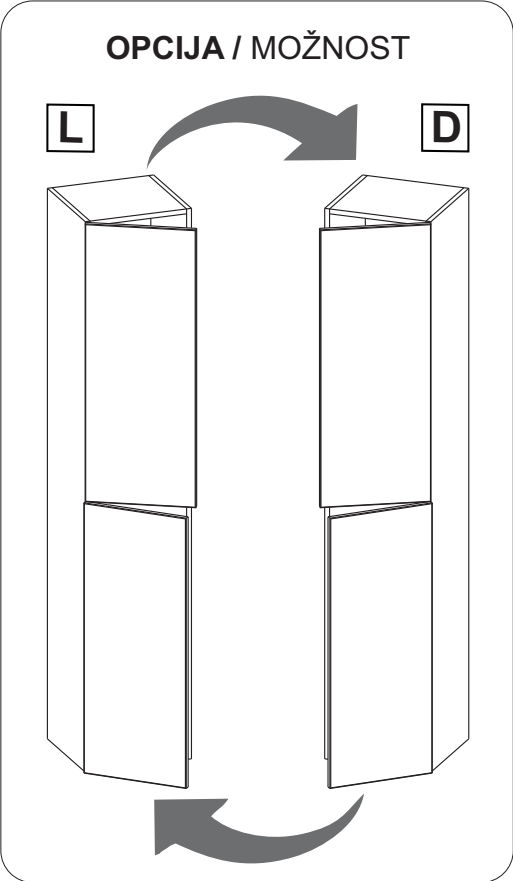


4



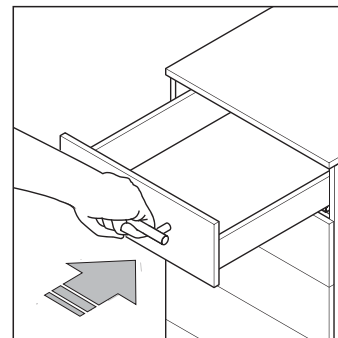
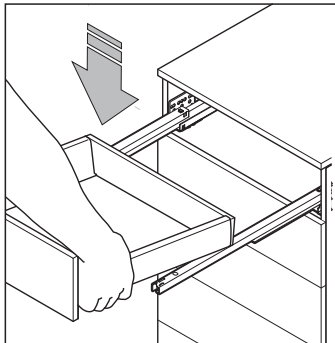


4



**HR** Umetanje ladica na vodilice

**SLO** Vstavljanje predalov na vodila

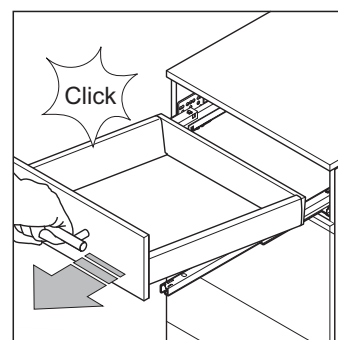
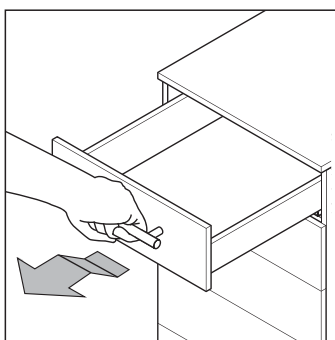


**HR** Vađenje ladica s vodilica

**SLO** Odstranitev predalov z vodilov

Lagano podignuti ladicu  
10 cm prije dolaska u  
krajnju poziciju

Malo dvignite predal  
10 cm preden pridete do  
končnega položaja

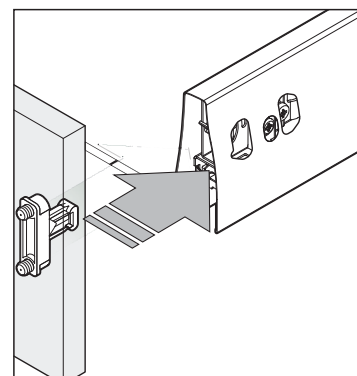


**HR** Montaža fronte

**SLO** Nastavitev fronte

Fronta se automatski fiksira umetanjem  
spojnica u bočne stranice

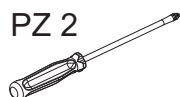
Fronta se avtomatski učvrsti z vstavljanjem  
spojne na stranskih strani



**HR** Skidanje fronte

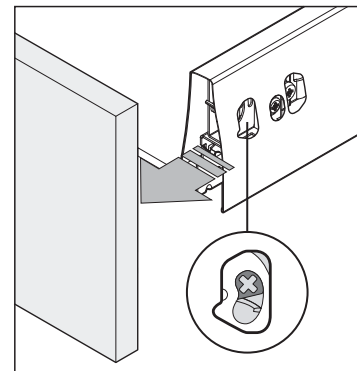
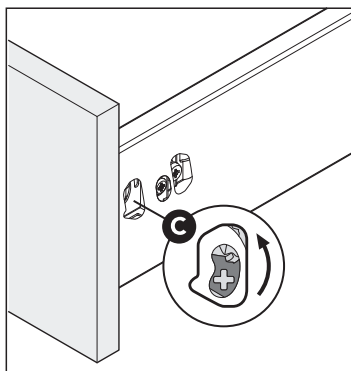
**SLO** Odstranitev fronte

PZ 2



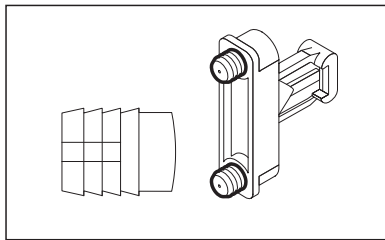
Ukoliko postoji prednja  
donja spojnica fronte,  
prvo na njoj ukloniti vijake

Če je spredaj spodnja  
spojna fronte,  
najprej odstranite vijake  
na njem

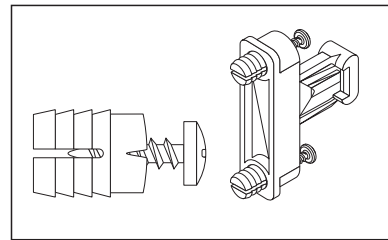


**HR** Savjeti za instalaciju  
**SLO** Nasveti za namestitev

OPCIJA A:  
MOŽNOST A:



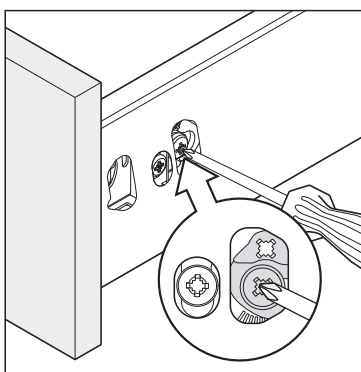
OPCIJA B:  
MOŽNOST B:



**HR** Podešavanje visine fronte  
**SLO** Nastavitev višine fronte

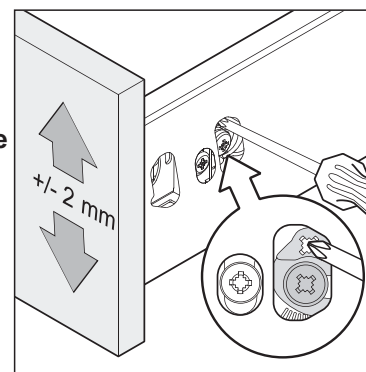
Otpustiti vijke za zaključavanje na obje strane ladice

Sprostite pritrdilne vijake na obeh straneh predala



Podesiti frontu i ponovno pritegnuti vijke za zaključavanje

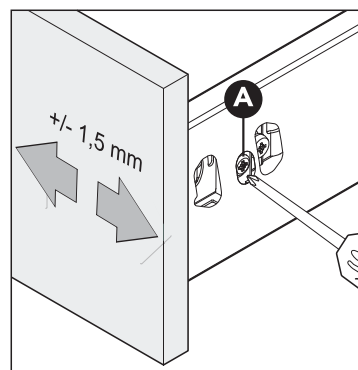
Nastavite frontu in zadaj ponovno zategnite vijake za zaklepanje



**HR** Bočno podešavanje fronte  
**SLO** Stranska nastavitev fronte

Podešavanje izvršiti okretanjem vijka samo na desnoj strani

Nastavitev z vrtenjem vijaka samo na desni strani



**HR** Podešavanje nagiba fronte (samo ako se koriste dodatne šipke za ukrutu)  
**SLO** Nastavitev nagiba fronte (samo če se uporabljajo dodatne palice)

